



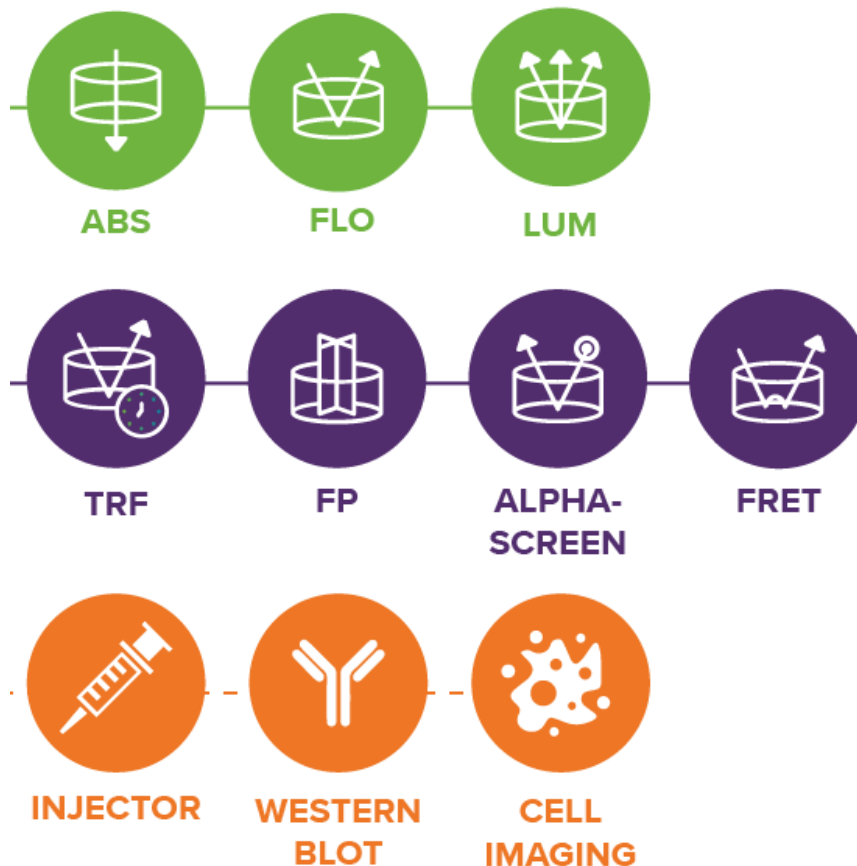
 **MOLECULAR
DEVICES**
UNLEASH YOUR BRILLIANCE™

SpectraMax i3x

Multi-Mode Detection Platform
多功能光學測讀平台之操作與應用

金萬林企業股份有限公司
產品專員 陳雅琳 Debby

SpectraMax i3x Multi-Mode Detection Platform



Cartridges – Future Ready

- **User-upgradeable within 2 minutes**

- No messy upgrades
- No instrument down time
- Only cost – new cartridge

- **Applications (20 options)**

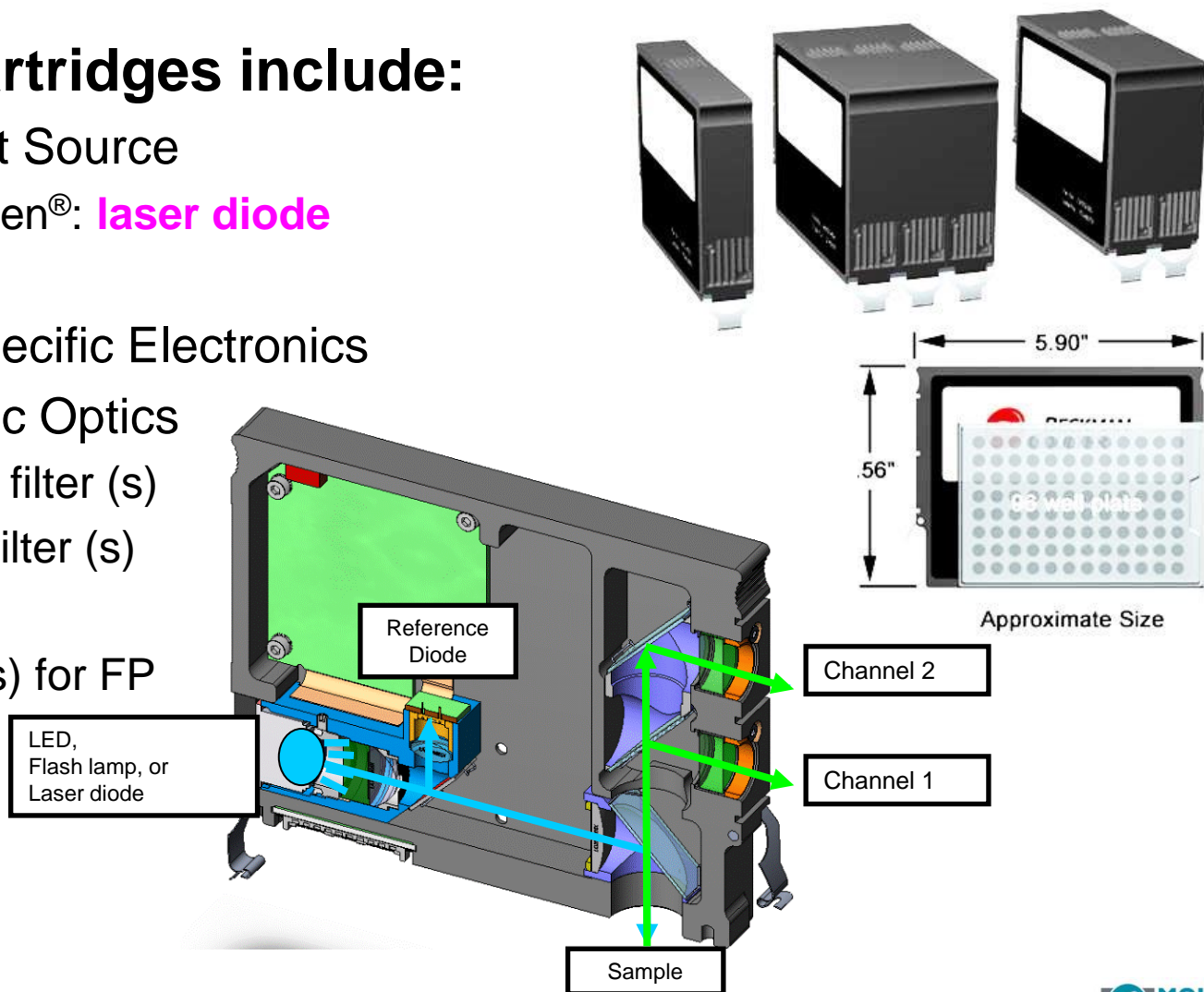
- Injector cartridge
- ScanLater™ (Western Blot)
- AlphaScreen® (PE)
- HTRF® (Cisbio)
- Customization
- And more



Each Cartridge Is One Microplate Reader

- **Detection Cartridges include:**

- Optimal Light Source
 - AlphaScreen®: **laser diode**
 - FL: **LED**
- Detection Specific Electronics
- Label Specific Optics
 - Excitation filter (s)
 - Emission filter (s)
 - Dichroics
 - Polarizer(s) for FP

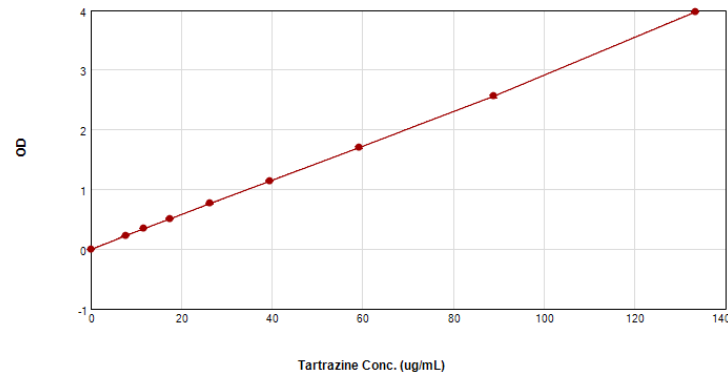


Technical Specifications

- **Microplates:** 6, 12, 24, 48, 96, and 384 wells
- **Light source:** Spectral Fusion Illumination (Xenon flash lamp + high-powered LEDs)
- **Wavelength selection:** 2x2 Monochromator Design
- **Detectors:** Silicon photodiode
Cooled photomultiplier tube
- **Read types:** Endpoint, Kinetic, Spectrum scan, Well scan
- **Shaking:** Linear and Orbital (3 intensity)
- **Temp. control:** 4°C above ambient to 45°C

Absorbance with SpectraMax i3x Platform

- Light source: **Xenon Flash Lamp**
- Detection: Photodiode
- Wavelength selection: Dual Monochromator
- Spectral Range: 230-1000 nm
- Read: top to bottom
- Bandwidth: 4nm
- **Performance**
 - System has less stray light than single Monochromator system
 - More sensitive
 - Linearity up to 4 OD

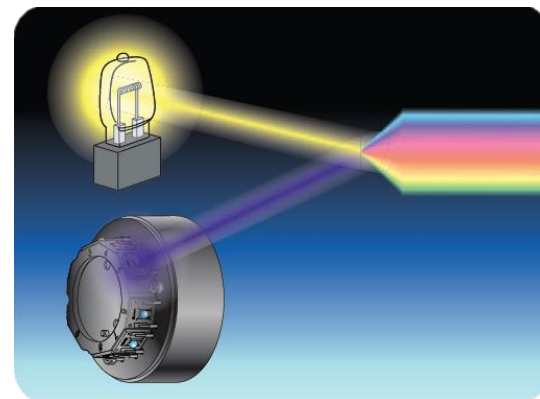
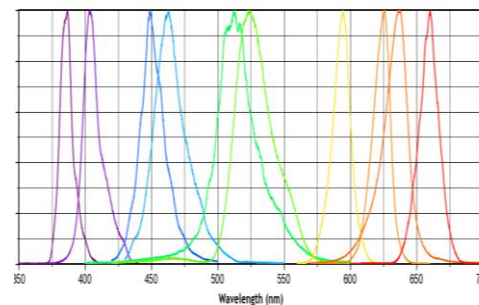
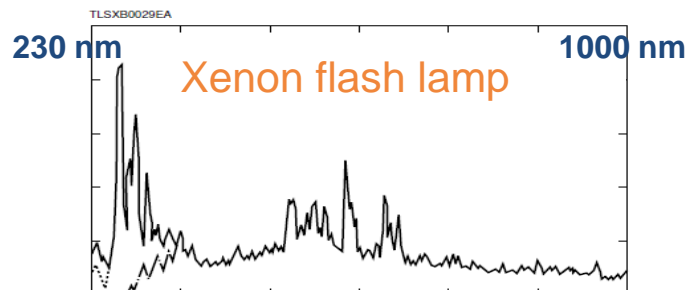


Fluorescence with SpectraMax i3x Platform

- Light source: **Spectral Fusion™ Illumination**
- Detection: PMT
- Wavelength selection: 2 x 2 Monochromator
- Spectral Range: 250-850 nm
- Read: Top and bottom
- Bandwidth: Ex 9 or 15 nm, Em 15 or 25 nm
- Performance
 - 2x2 Monochromator design in combination with Spectral Fusion™ Illumination allow this system to be
 - More sensitive
 - Higher dynamic range
 - Full spectral range

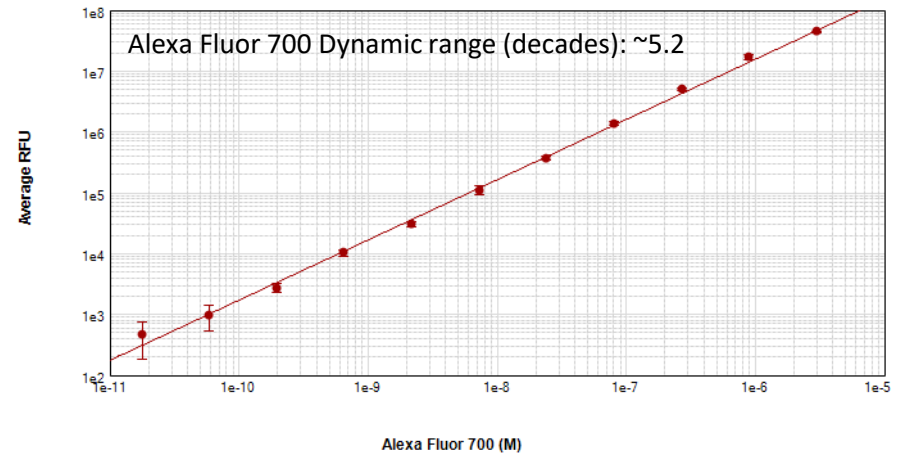
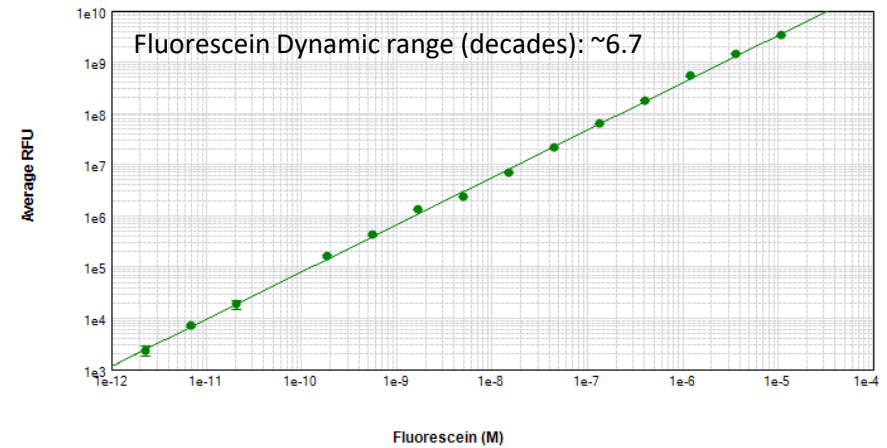
Unique Spectral Fusion™ Illumination

- **Revolutionary light source design**
 - Xenon flash lamp (for deep UV)
 - Intensified by LEDs in visible range
 - More powerful
- **Increased sensitivity**
 - Ultimately increasing the sensitivity of the system across the full spectrum
- **Auto LED**
- **High dynamic range for all conc. on one plate**
 - No need to reread
 - No saturation



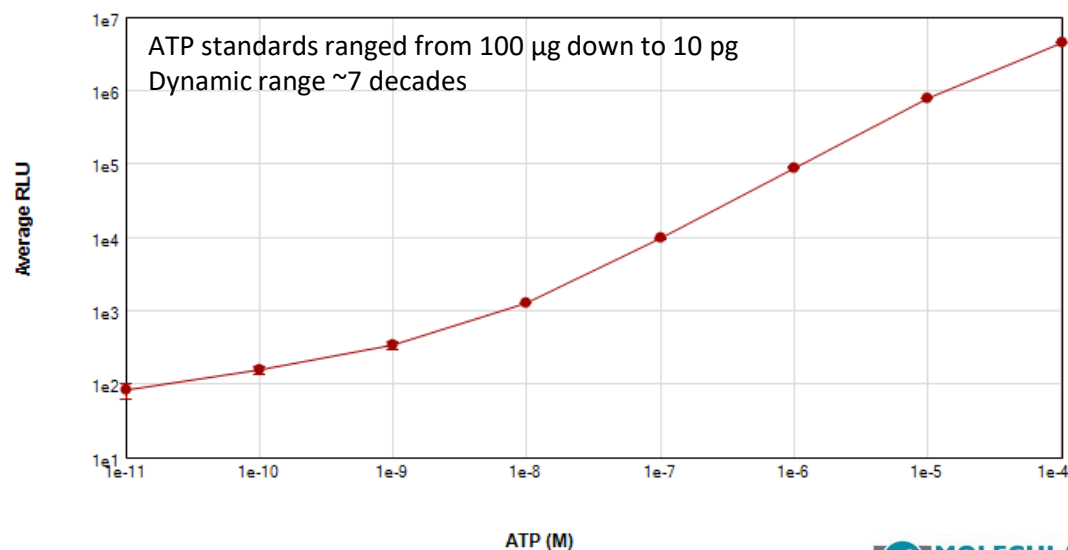
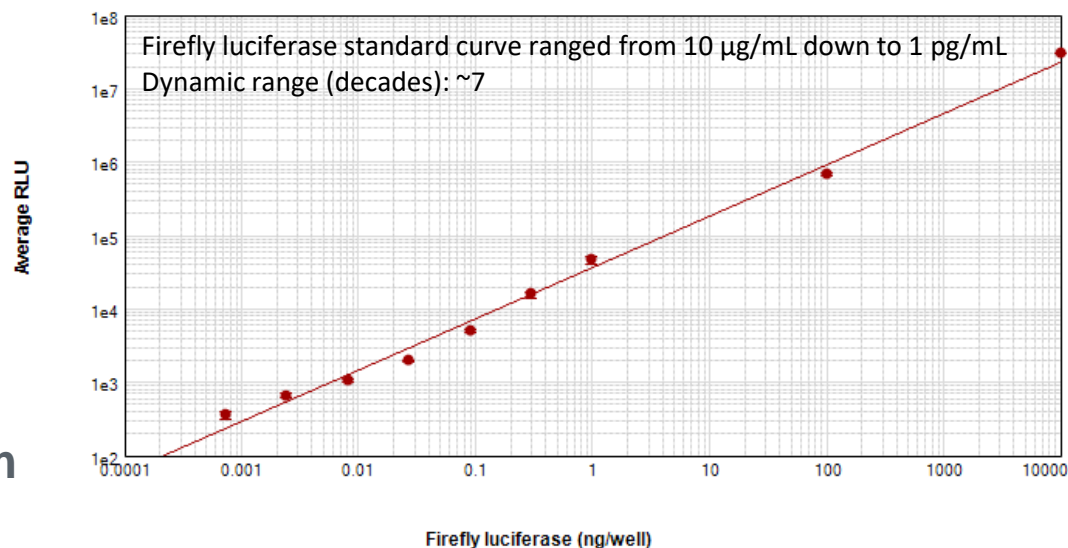
Extended Dynamic Range

SpectraMax i3x Base System	Est. dyn. range (decades)
Alexa 430	> 4
Fluorescein	> 6
Alexa 700	> 5



Luminescence with SpectraMax i3x system

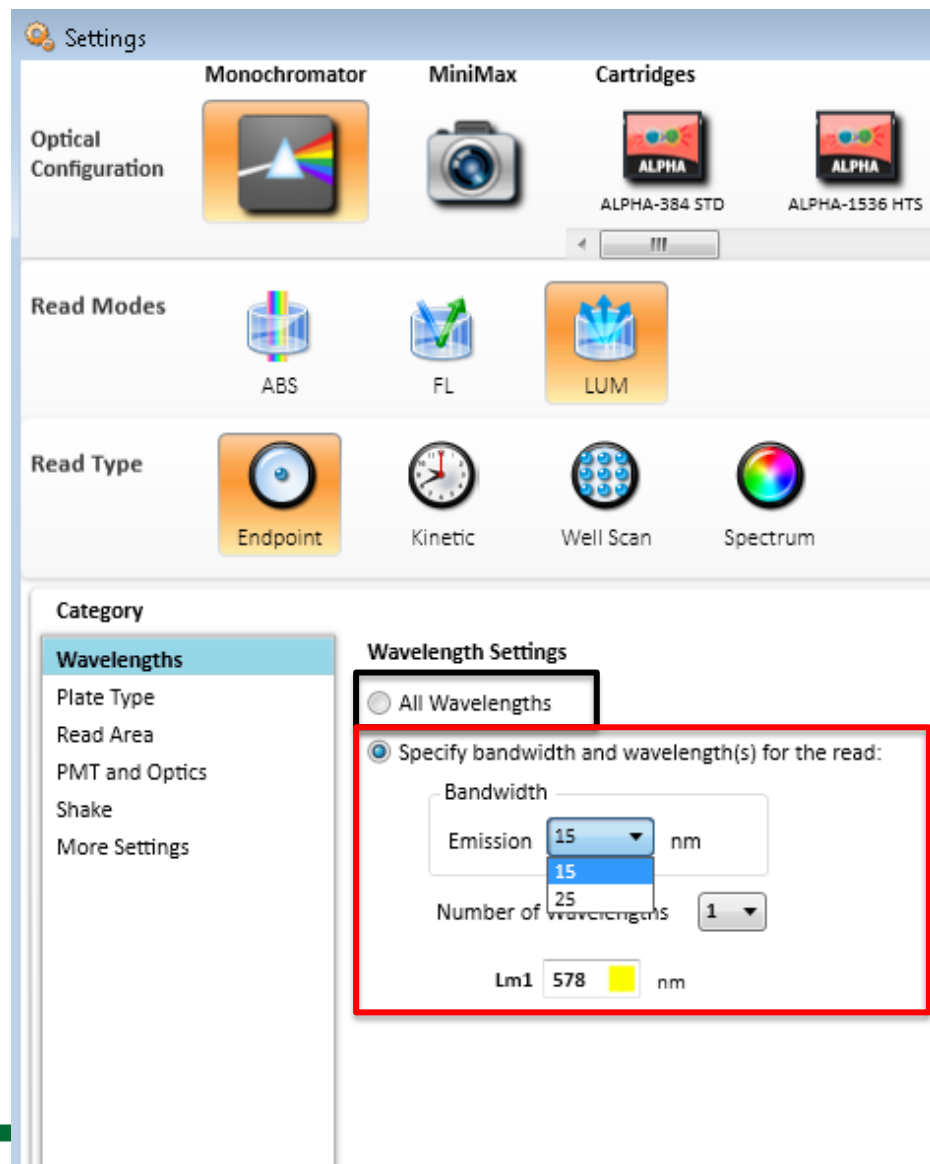
- Detection: **Cooled PMT**
- Wavelength selection: Dual Monochromator for Em only
- Spectral Range: 300-850 nm
- Read: top only
- Bandwidth for Em: **15 or 25 nm**
- **Performance:**
 - Low instrument background
 - High sensitivity across the visible range (most applications)



Luminescence with SpectraMax i3x system

- In SoftMax Pro two options for Emission:

- Read at all wavelengths
- Read at specific wavelengths (BRET)
 - Choose the BW
 - Choose up to 4 different wavelengths
 - Choose the Wavelength



SoftMax Pro 7 Software



The central logo for SoftMax Pro 7 is a large blue circle containing the text "SoftMax Pro" in white, with a large, stylized orange-outlined number "7" to its right. The background of the slide features several circular vignettes: a yellow circle, a blue circle with a person in a lab coat looking at a chromatogram, a purple circle, an orange circle with a person at a computer, a large blue circle with the main logo, a purple circle, and a blue circle with a person looking at a molecular structure. A large orange-outlined "7" is also visible on the right side of the central blue circle.

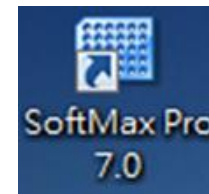
**SoftMax
Pro**

SoftMax Pro 7 Data Acquisition and Analysis Software

Software Interface

The New Experiment icons moved into the Navigation Tree

Frequently used Icons moved from the operations tab into the Home tab



SoftMax Pro 7.1

Home Protocols View Operations Workflow Help

SpectraMax i3x (Simulated) Idle

Temperature Open / Close Shake Instrument Commands

Protocol Manager Protocols Acquisition Settings Acquisition Settings

Read Append Controls and Status

Reduction Display 3D Zoom Mask Clone Plate Plate Tools

Template Editor Copy Paste Import Export Template Tools

Untitled1 Document Comparison Workflow

Navigation Tree

- New Experiment New Plate
- New Note New Graph
- Delete Selection New Cuvette Set
- BasicEndpoint
- Intro
- Expt1
 - Plate1
 - Standards
 - Unknowns
 - Unk_Dilution
 - Control
 - StandardCurve

Expt1 Plate1

Plate1

	1	2	3	4	5	6	7	8	9	10	11	12
A												
B												
C												
D												
E												
F												
G												
H												

Settings Information

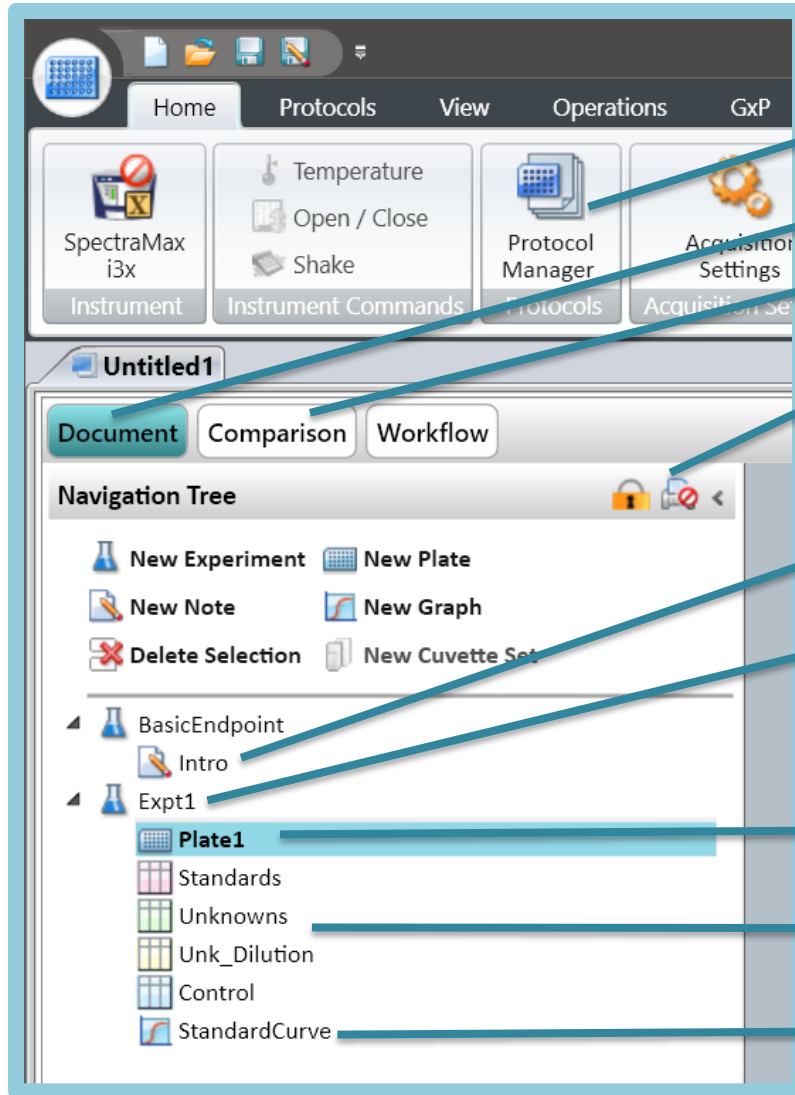
- Endpoint
 - Lm1 405
- More Settings
 - Shake Off
 - Calibrate On
 - Carriage Speed Normal
 - Column Priority

Reduction Settings

Optical Density

Wavelength Combination : ILm1

Project Oriented Interface



檔案管理

分頁模式

比較模式

可獨立設定“編輯性”
or “是否列印”

註解/摘要報告

不同實驗混編

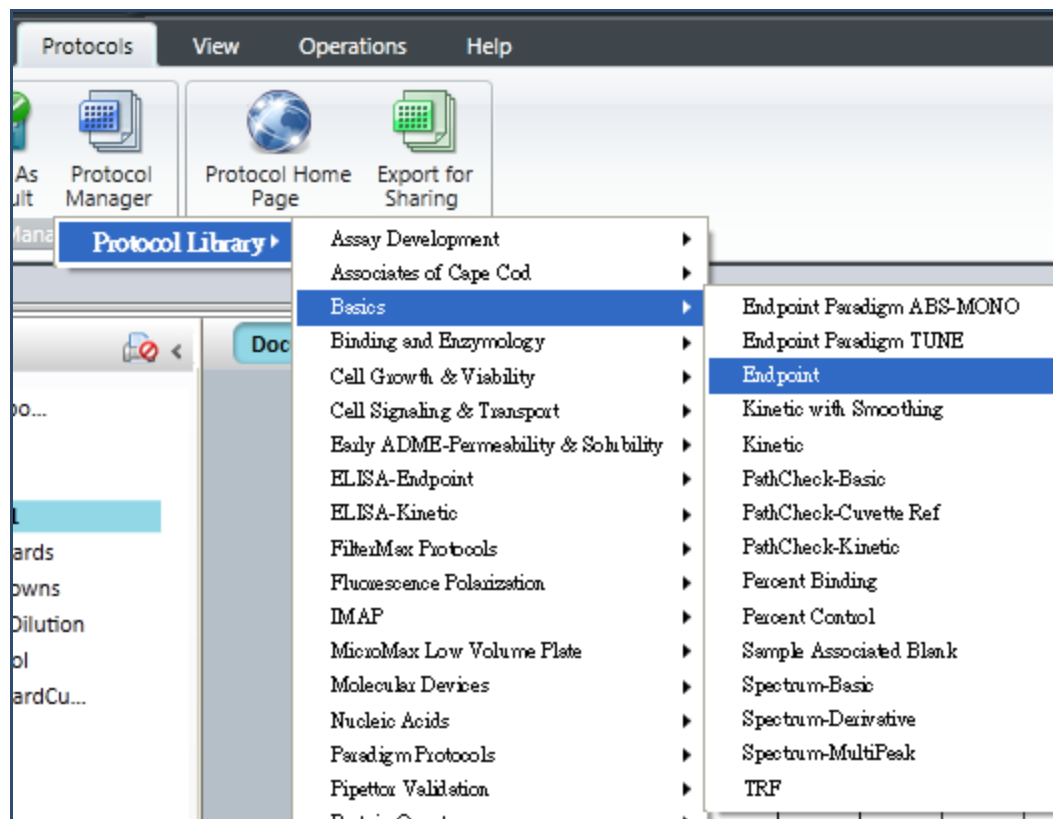
原始資料(Raw Data)

分析資料(Meta Data)

曲線擬合/統計

Ready-to-run Protocols

- Assay methods set up as ready-to-run protocols
- Over **160** customizable protocols available
- Customers can save files as “protocols” to simplify repeated experiments in the future.



硬體設定



分析設定



SoftMax Pro 7.1

Home Protocols View Operations Workflow Help

SpectraMax i3x (Simulated) Idle

Temperature Open / Close Shake Instrument Commands

Protocol Manager Protocols **Acquisition Settings** Read Append Controls and Status

Reduction Display 3D Mask Clone Plate Plate Tools

Template Editor Copy Import Paste Export Template Tools

Untitled1

Document Comparison Workflow

Navigation Tree

- New Experiment New Plate
- New Note New Graph
- Delete Selection New Cuvette Set
- BasicEndpoint
 - Intro
- Expt1
 - Plate1**
 - Standards
 - Unknowns
 - Unk_Dilution
 - Control
 - StandardCurve

Expt1 Plate1

Plate1

	1	2	3	4	5	6	7	8	9	10	11	12
A												
B												
C												
D												
E												
F												
G												
H												

Settings Information

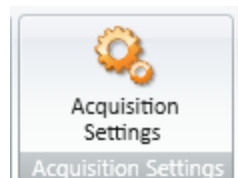
- Endpoint
 - Lm1 405
- More Settings
 - Shake Off
 - Calibrate On
 - Carriage Speed Normal
 - Column Priority

Reduction Settings

Optical Density
Wavelength Combination : !Lm1

110%

Absorbance



Wavelengths

Settings

Optical Configuration

Cartridges

ALPHA-384 STD
 ALPHA-1536 HTS
 ALPHA-384 HTS
 FP-FLUO
 FP-RHOD
 FI

Read Modes

ABS
 FL
 LUM

Read Type

Endpoint
 Kinetic
 Well Scan
 Spectrum

Category

Wavelengths

Plate Type

Read Area

PathCheck

Shake

Speed Read

More Settings

Wavelength Settings

Number of Wavelengths

6

Lm1	405		nm
Lm2	426		nm
Lm3	426		nm
Lm4	426		nm
Lm5	426		nm
Lm6	426		nm

Specify the number of wavelengths to read, and then type a wavelength value in the field for each wavelength. For details, click More Information.

Settings Information

Endpoint

Absorbance

Lm1 405

Lm2 426

Lm3 426

Lm4 426

Lm5 426

Lm6 426

Plate Type

96 Well Standard clrbtm

Landscape

Height 14.6 mm

Read Area

Entire Plate

More Settings

Shake Off

ReadOrder Row

Standard View

Acquisition View

OK

Cancel

Absorbance



Plate Type

Settings

Optical Configuration

Monochromator
 Cartridges

Read Modes

ABS
 FL
 LUM

Read Type

Endpoint
 Kinetic
 Well Scan
 Spectrum

Category

Wavelengths
Plate Type
Read Area
PathCheck
Shake
Speed Read
More Settings

Plate Type Settings

Plate Format **96 Wells**

☐ Is Lidded

Select Specific

96 Well Standard clrbtm
96 Well BD Biocoat Collagen I Coated blk/clrbtm
96 Well BD FluoroBlok MW Insert
96 Well BD Optilux/Biocoat
96 Well Corning Half Area flat clrbtm
96 Well Costar blk/clrbtm
96 Well Costar clear
96 Well Falcon clear
96 Well Greiner blk/clrbtm
96 Well Greiner clear

Edit Plate
Import Plate
Remove

Select the plate size, and then select the plate definition from the list. If you are uncertain which plate to select, then select the Standard plate definition. For details, click More Information.

Settings Information

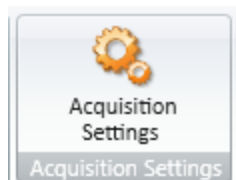
Endpoint
▲ Absorbance
Lm1 405
Lm2 426
Lm3 426
Lm4 426
Lm5 426
Lm6 426
▲ Plate Type
96 Well Standard clrbtm
Landscape
Height 14.6 mm
▲ Read Area
Entire Plate
▲ More Settings
Shake Off
ReadOrder Row

Standard View Acquisition View

OK

Cancel

Absorbance



Read Area

Settings

Optical Configuration

Monochromator
 Cartridges

Read Modes

ABS
 FL
 LUM

Read Type

Endpoint
 Kinetic
 Well Scan
 Spectrum

Category

Wavelengths
Plate Type
Read Area
PathCheck
Shake
Speed Read
More Settings

Read Area Settings

96 Well Standard clrbtm
 ☒ Select All

	1	2	3	4	5	6	7	8	9	10	11	12
A												
B												
C												
D												
E												
F												
G												
H												

You can choose to read an entire plate or a subset of wells. Drag the cursor to select the wells to be read. For details, click More Information.

Settings Information

Endpoint
 ▲ Absorbance
 Lm1 405
 Lm2 426
 Lm3 426
 Lm4 426
 Lm5 426
 Lm6 426
 ▲ Plate Type
 96 Well Standard clrbtm
 Landscape
 Height 14.6 mm
 ▲ Read Area
 Entire Plate
 ▲ More Settings
 Shake Off
 ReadOrder Row

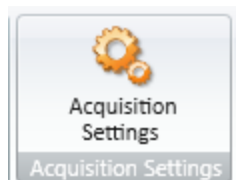
Standard View

Acquisition View

OK

Cancel

Absorbance



PathCheck

Settings

Optical Configuration

Monochromator
 ALPHA-384 STD
 ALPHA-1536 HTS
 ALPHA-384 HTS
 FP-FLUO
 FP-RHOD
 FI

Read Modes

ABS
 FL
 LUM

Read Type

Endpoint
 Kinetic
 Well Scan
 Spectrum

Category

Wavelengths
Plate Type
Read Area
PathCheck
Shake
Speed Read
More Settings

PathCheck Settings

☐ PathCheck

Path Check normalizes your absorbance values to a 1 cm path length based on the near-infrared absorbance of water. For details, click More Information.

Settings Information

Endpoint

▲ Absorbance

Lm1 405

Lm2 426

Lm3 426

Lm4 426

Lm5 426

Lm6 426

▲ Plate Type

96 Well Standard clrbtm

Landscape

Height 14.6 mm

▲ Read Area

Entire Plate

▲ More Settings

Shake Off

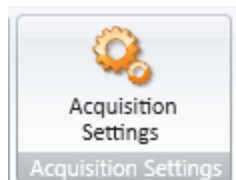
ReadOrder Row

Standard View Acquisition View

OK

Cancel

Absorbance



Shake

Settings

Optical Configuration

Monochromator
 ALPHA-384 STD
 ALPHA-1536 HTS
 ALPHA-384 HTS
 FP-FLUO
 FP-RHOD
 FI

Read Modes

ABS
 FL
 LUM

Read Type

Endpoint
 Kinetic
 Well Scan
 Spectrum

Category

Wavelengths
Plate Type
Read Area
PathCheck
Shake
Speed Read
More Settings

Shake Settings

☐ Before First Read
 secs
 Shake Intensity

Medium

 Shake Mode

Orbital

Settings Information

Endpoint
 Absorbance
 Lm1 405
 Lm2 426
 Lm3 426
 Lm4 426
 Lm5 426
 Lm6 426
 Plate Type
 96 Well Standard clrbtm
 Landscape
 Height 14.6 mm
 Read Area
 Entire Plate
 More Settings
 Shake Off
 ReadOrder Row

Standard View

Acquisition View

OK

Cancel

You can enable shaking before the first read of a plate and set the duration of the mixing time in seconds. For details, click More Information.

Absorbance



Speed Read

Settings

Optical Configuration

Monochromator
 Cartridges

Read Modes

ABS
 FL
 LUM

Read Type

Endpoint
 Kinetic
 Well Scan
 Spectrum

Category

Wavelengths
Plate Type
Read Area
PathCheck
Shake
Speed Read
More Settings

Speed Read

☐ Speed Read

Enable Speed Read to read the plate faster by substituting firmware values for calibration values and by decreasing the number of lamp flashes.

Settings Information

Endpoint
 ▲ Absorbance
 Lm1 405
 Lm2 426
 Lm3 426
 Lm4 426
 Lm5 426
 Lm6 426
 ▲ Plate Type
 96 Well Standard clrbtm
 Landscape
 Height 14.6 mm
 ▲ Read Area
 Entire Plate
 ▲ More Settings
 Shake Off
 ReadOrder Row

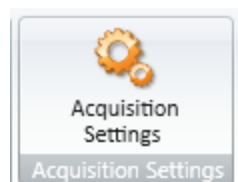
Standard View

Acquisition View

OK

Cancel

Absorbance



More Setting

Settings

Optical Configuration

Monochromator
 Cartridges

Read Modes

ABS
 FL
 LUM

Read Type

Endpoint
 Kinetic
 Well Scan
 Spectrum

Category

Wavelengths
Plate Type
Read Area
PathCheck
Shake
Speed Read
More Settings

More Settings

Read Order Row

Show Pre-Read Optimization Options ☐

For information on the available More Settings, click More Information.

Settings Information

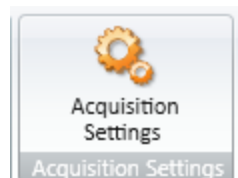
Endpoint
▲ Absorbance
Lm1 405
Lm2 426
Lm3 426
Lm4 426
Lm5 426
Lm6 426
▲ Plate Type
96 Well Standard clrbtm
Landscape
Height 14.6 mm
▲ Read Area
Entire Plate
▲ More Settings
Shake Off
ReadOrder Row

Standard View Acquisition View

OK

Cancel

Absorbance



More Setting

Settings

Optical Configuration

Monochromator
 Cartridges
 ALPHA-384 STD
 ALPHA-1536 HTS
 ALPHA-384 HTS

Read Modes

ABS
 FL
 LUM

Read Type

Endpoint
 Kinetic
 Well Scan
 Spectrum

Category

Wavelengths
Plate Type
Read Area
PathCheck
Shake
Speed Read
More Settings

More Settings

Read Order Row

Show Pre-Read Optimization Options ☐

Verify Well Centers

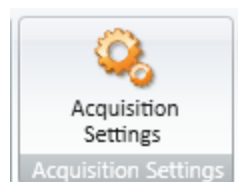
Verify the dimensions of the microplate. You can edit the values in the fields or return to a well step to redefine its center. Type a name for the microplate definition in the Microplate Name field. Click Save to save the microplate definition.

▼ Microplate Dimensions	
Bottom-row y offset (mm)	11.022
Column spacing (mm)	9.002
Left-column x offset (mm)	14.576
Right-column x offset (mm)	14.156
Row spacing (mm)	8.996
Top-row y offset (mm)	11.477
▼ Microplate Name	
Microplate Name	96 Well Standard clrbtm [MONO-Landscape]

24

MOLECULAR
DEVICES
UNLEASH YOUR BRILLIANCE™

Absorbance



Kinetic

Timing

Settings

Monochromator

Optical Configuration

Cartridges

ALPHA-384 STD

ALPHA-1536 HTS

ALPHA-384 HTS

FP-FLUO

FP-RHOD

FI

Read Modes

ABS

FL

LUM

Read Type

Endpoint

Kinetic

Well Scan

Spectrum

Category

Wavelengths

Plate Type

Read Area

Timing

Shake

Speed Read

More Settings

Timing Settings

Total Run Time

00 : 10 : 00

hh : mm : ss

Interval

00 : 00 : 59

hh:mm:ss

Minimum Interval:

~0:54

Maximum Interval:

10:00

Number of Reads:

11

Single Point Read

Set timing to a single point read for kinetic workflows that alternate activities within a cycle.
Example: Multitask kinetic assay with alternating absorbance and fluorescence reads.

Enter a total run time and the interval between readings. For details, click More Information.

Settings Information

Kinetic

Time: 10:00

Interval: 00:00:59

Reads: 11

Min Interval: 00:54

Absorbance

Lm1 405

Plate Type

96 Well Standard clrbtm

Landscape

Height 14.6 mm

Read Area

Entire Plate

More Settings

Shake before Off

Shake between Off

ReadOrder Row

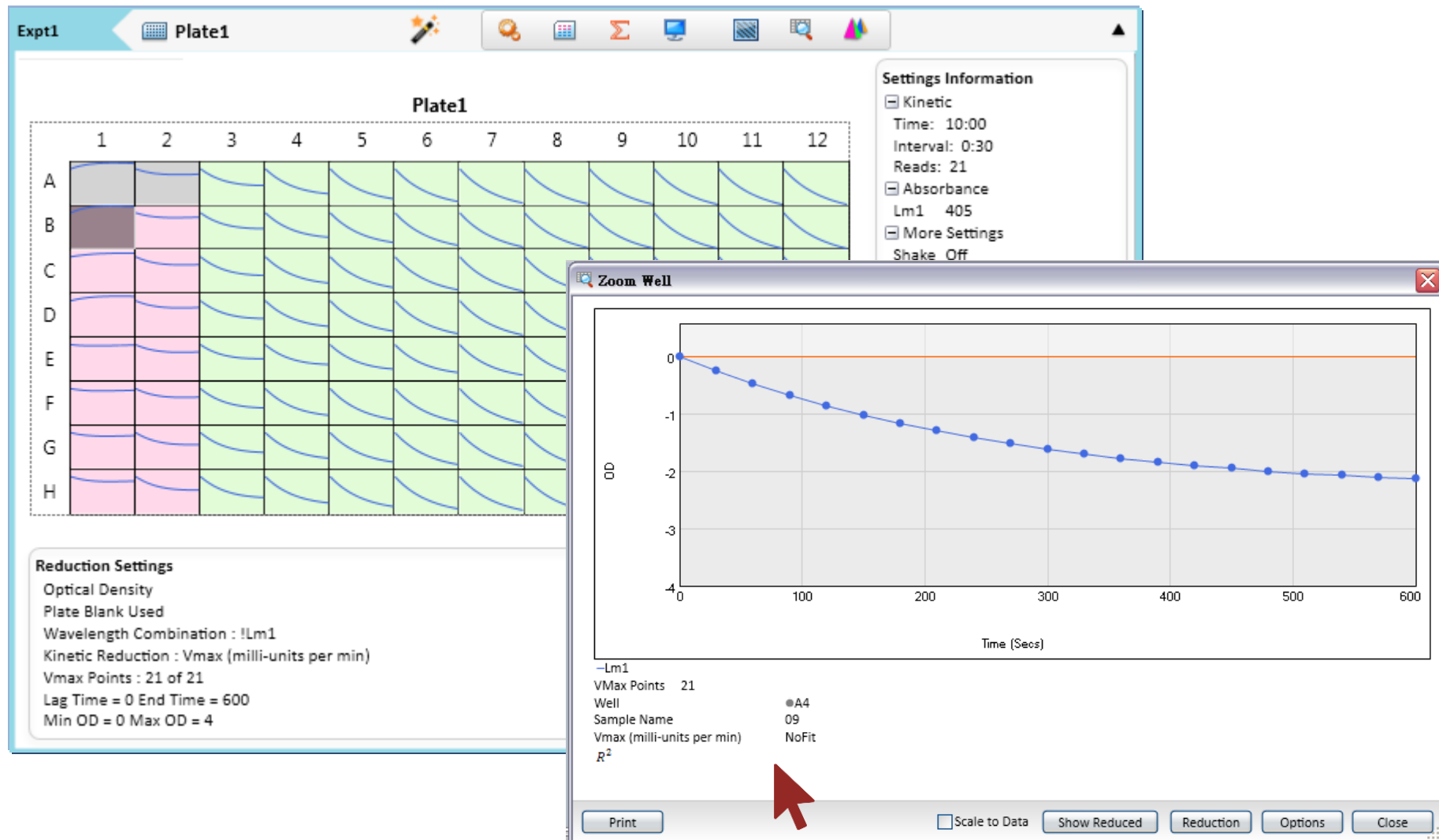
Standard View

Acquisition View

OK

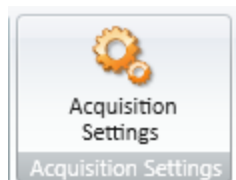
Cancel

Absorbance



Reduction of V_{Max} and K_m

Absorbance



Well Scan

Well Scan Setting

Settings

Optical Configuration

Monochromator
 ALPHA-384 STD
 ALPHA-1536 HTS
 ALPHA-384 HTS
 FP-FLUO
 FP-RHOD
 FI

Read Modes

ABS
 FL
 LUM

Read Type

Endpoint
 Kinetic
 Well Scan
 Spectrum

Category

Wavelengths
Plate Type
Read Area
Well Scan Settings
Shake
More Settings

Well Scan Settings

Pattern:

Horizontal
 Fill
 Cross

Points Per Well 52
 Density: 8
 Point Spacing ~0.74

Well Scan allows readings to be taken at more than one location within a well. You can specify the scanning pattern and density. For details, click More Information.

Settings Information

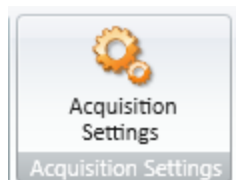
- WellScan
 - Pattern: Fill
 - Density: 8
 - Spacing: 0.74mm
 - Total Points: 52
- Absorbance
 - Lm1 405
- Plate Type
 - 96 Well Standard clrbtm
 - Landscape
 - Height 14.6 mm
- Read Area
 - Entire Plate
- More Settings
 - Shake Off
 - ReadOrder Row

Standard View Acquisition View

OK

Cancel

Absorbance



Spectrum

Wavelengths

Settings

Optical Configuration

Monochromator
 Cartridges

Read Modes

Read Type

Category

Wavelengths

Plate Type

Read Area

Shake

Speed Read

More Settings

Wavelength Settings

Start: 230 nm

Stop: 1000 nm

Step: 10 nm

Choose a Start and a Stop wavelength, and a wavelength step for each increment between reads. For details, click More Information.

Settings Information

Spectrum

▲ Absorbance

Start: 230

Stop: 1000

Step: 10

▲ Plate Type

96 Well Standard clrbtm

Landscape

Height 14.6 mm

▲ Read Area

Entire Plate

▲ More Settings

Shake Off

ReadOrder Well

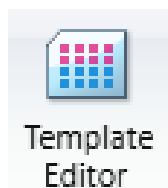
Standard View

Acquisition View

OK

Cancel

分析設定



Template Editor

Select wells, and then add or select a group (or blank) and assign.

Copy

Paste ▾

Clear

View

☒ Sample Name

☐ Descriptor

	1	2	3	4	5	6	7	8	9	10	11	12
A												
B												
C												
D												
E												
F												
G												
H												

Groups

Add

Edit

Delete

- ▾ Standards
 - Standards
- ▾ Unknowns
 - Unknowns
 - Unk_Dilution
- ▾ Custom
 - Control

Assignment Options

Blanks

Plate Blank

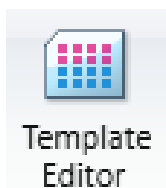
Select wells and a group to assign samples

Print

OK

Cancel

分析設定



1. 圈選區塊
2. 指定類型

Template Editor

Select wells, and then add or select a group (or blank) and assign.

Copy Paste ▼ Clear

View ☒ Sample Name ☐ Descriptor

	1	2	3	4	5	6	7	8	9	10	11	12
A												
B												
C												
D												
E												
F												
G												
H												

Groups

Add Edit Delete

- Standards
 - Standards
- Unknowns
 - Unknowns
 - Unk_Dilution
- Custom
 - Control

Assignment Options

Blanks

Plate Blank

Group Blank

Standards

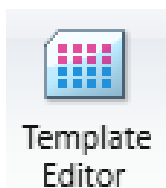
Sample 01

Concentration mg/ml

Assign Series

Print
OK Cancel

分析設定



1. 圈選區塊
2. 指定類型
3. 樣本分布 (Series)

Template Editor

Select wells, and then add or select a group (or blank) and a

Copy

Paste ▾

Clear

	1	2	3	4	5	6
A	Standards					
B	01	01				
C	01	01				
D	01	01				
E	01	01				
F	01	01				
G	01	01				
H	01	01				

Assignment Options

Blanks

Plate Blank

Group Blank

Standards

Sample 01

Concentration

Assign

Series

Series

Define samples as a series in a template.

Series Layout

Start From

☒ Top to Bottom
 ☐ Bottom to Top
 ☐ Left to Right
 ☐ Right to Left

☐ Reverse Series

Pattern of Replicates

X - Direction 2 Well(s)

Y - Direction 1 Well(s)

Sample Information

Starting Sample Name 01

☒ Concentration

Starting Value 1 mg/ml

Step by / 2

OK

Cancel

分析設定

SoftMax Pro 7.1

Home Protocols View Operations Workflow Help

Idle (Simulated)

Temperature Open / Close Instrument Commands

Protocol Manager Protocols

Acquisition Acquisition Settings

Read Append Controls and Status

New Delete Auto Size Copy Edit Show/Hide Paste Cut Hide Replicates Column Tools

Copy New Summary Paste Edit Summary Delete Show Formulas Summary Tools

Adobe Devanagari 10 X₂ X₂ Formatting Tools

Untitled1

Document Comparison Workflow

Navigation Tree

- New Experiment New Plate
- New Note New Graph
- Delete Selection New Cuvette Set
- BasicEndpoint
- Intro
- Expt1
 - Plate1
 - Standards**
 - Unknowns
 - Unk_Dilution
 - Control
 - StandardCurve

Standards

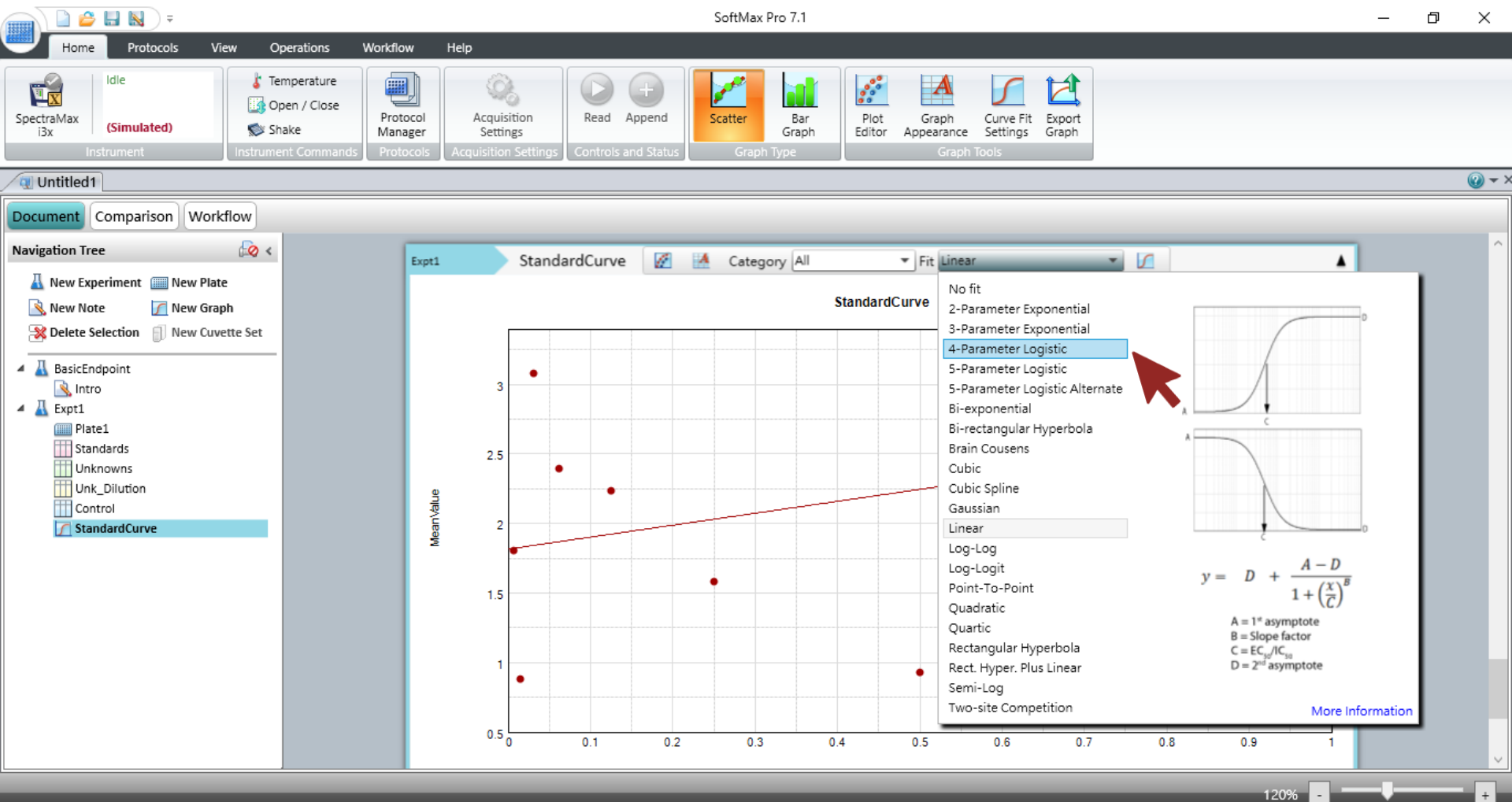
Sample	Conc	BackCalcConc	Wells	Value	MeanValue	SD	CV
01	1.000	1.131 2.444	A1	2.788	3.352	0.798	23.8
			A2	3.916			
02	0.500	-1.792 -0.276	B1	0.276	0.927	0.921	99.3
			B2	1.579			
03	0.250	1.415 -1.960	C1	3.032	1.582	2.051	129.6
			C2	0.132			
04	0.125	-0.133 1.109	D1	1.702	2.236	0.754	33.8
			D2	2.769			
05	0.063	-1.191 2.526	E1	0.793	2.390	2.258	94.5
			E2	3.987			
06	0.031	2.176 0.753	F1	3.686	3.075	0.865	28.1
			F2	2.463			
07	0.016	-1.761 -0.418	G1	0.303	0.880	0.816	92.7
			G2	1.457			
08	0.008	-1.444 1.407	H1	0.575	1.800	1.732	96.2
			H2	3.025			

Smallest standard value: 0.880

Largest standard value: 3.352

120%

分析設定



Formula system

Immu Assay demo TEST_A

Sample	Wells	COL1	Value	MeanValue	Risk Class 風險評比
01	A3	1	3.562	3.413	危險
	B3		3.264		
02	A4	2	0.566	0.617	未檢出
	B4		0.667		
03	A5	3	2.884	2.875	偏高
	B5		2.866		
04	A6	4	2.188	2.187	正常
	B6		2.186		

judgement criteria description (公式寫法)
 //巢狀條件式，與Excel寫法極為相近

MeanValue>DUL@Positive,"危險",If (MeanValue>DLL@Positive,If ("偏高",If (MeanValue<NDL@Negative,"未檢出","正常")))

- 檢出值 > Pos上限者 ==> 危險
- 檢出值 > Pos下限者 ==> 偏高
- 檢出值 < Pos下限者 ==> 正常
- 檢出值 < Neg限者 ==> 未檢出

Mathematical

Statistical

Comparison

Condition

Peak analysis

Array analysis

Sample	Wells	Sample#	Lm_run	OD_read	PEAK_Judge
01	B1	1	401	2.527	-
			431	3.174	PEAK@2
			461	0.726	
			491	0.090	
			521	2.352	
			551	3.661	PEAK@6
			581	0.441	PEAK@7
			611	2.039	
			641	3.771	PEAK@9
			671	3.093	
			701	2.783	
			731	2.488	-

Number of read point 12

Formula

☒ Syntax Helper

MeanValue>DUL@Positive,"危險",If (MeanValue>DLL@Positive,If ("偏高",If (MeanValue<NDL@Negative,"未檢出","正常")))



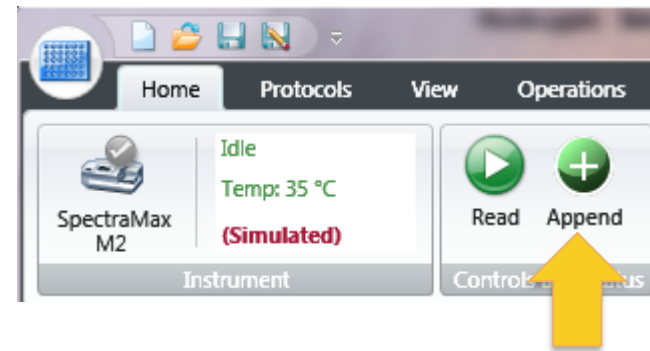
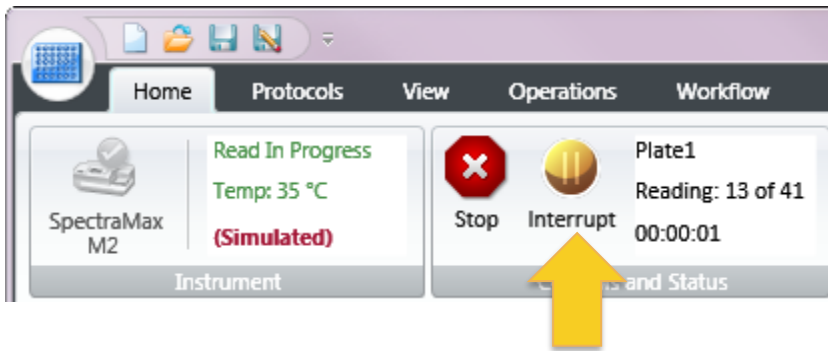
SoftMax Pro 7 Software

Advanced Acquisition

- Discontinuous kinetics
- Multitask kinetics via the workflow editor
- Graph menu reorganization
- Standard and GxP version

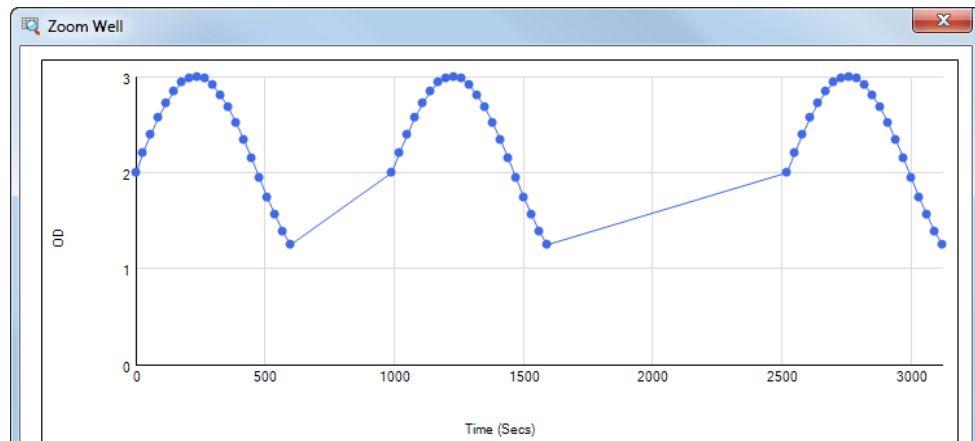
Discontinuous Kinetics Benefits

- Easy buttons



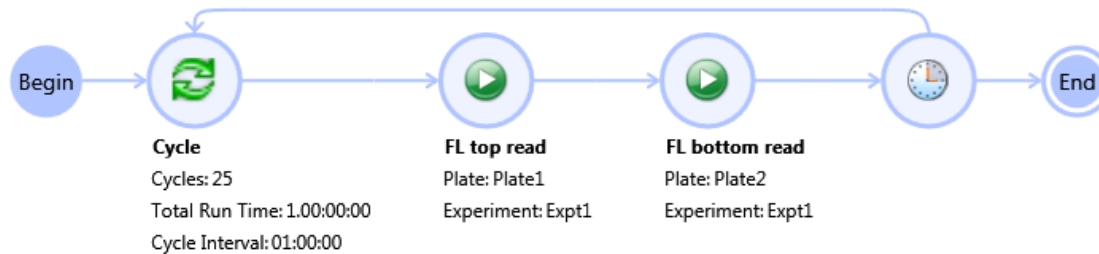
- Data appends to same set of kinetic data points

- Accurate time stamps
- Easy data reduction

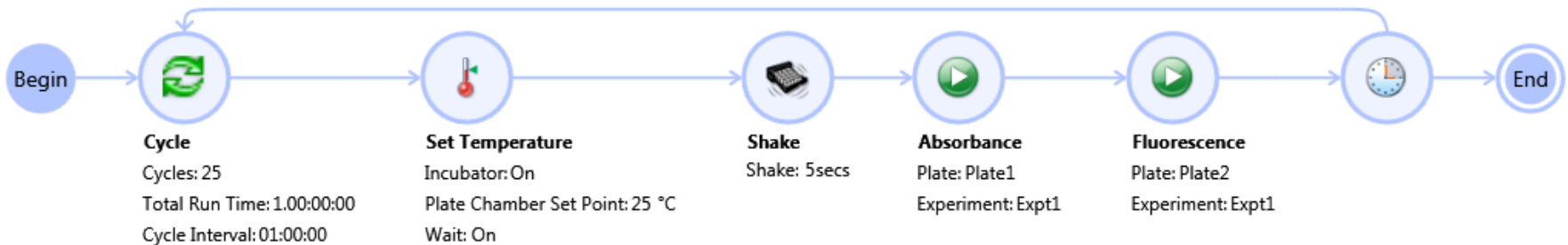


Multitask Kinetics Benefits

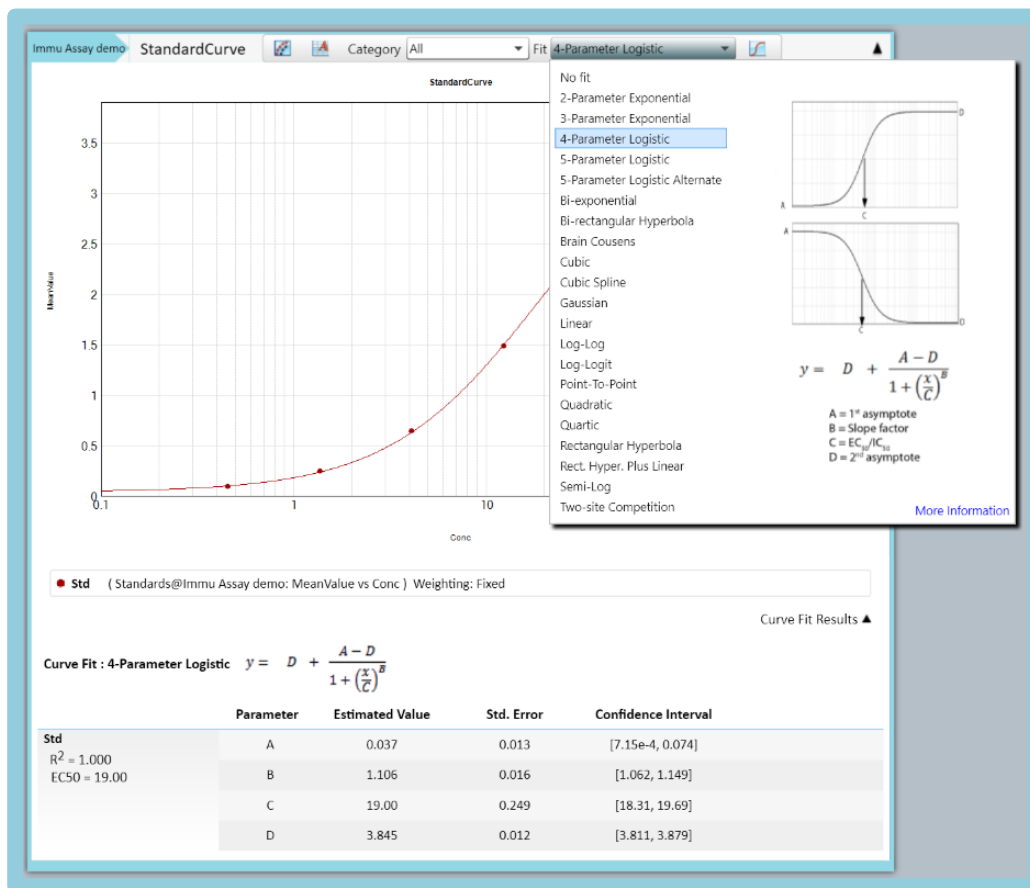
- Can't decide if top read is better than bottom read? Try both!



- Add in tasks: delay, shake, open drawer



Adaptable Graph system



Suspend Calculations $y=()$

Recalculate Now

Function Editor

Calculations

21 Predefined
Curve Fitting

Bar Chart

New Function
Editor

金萬林企業股份有限公司

產品技術應用服務

- 侯沛庠 MD 產品服務時間 06 年
- 劉儀君 MD 產品服務時間 05 年
- 陳雅琳 MD 產品服務時間 02 年
- 黃士宣 MD 產品服務時間 02 年

維修工程師

- 王佑毓 MD 產品維修年資 13 年
- 陳彥良 MD 產品維修年資 04 年
- 呂紹麟 MD 產品維修年資 03 年
- 陳建因 MD 產品維修年資 09 年

Molecular Devices台灣分公司

資深產品應用經理

- Pluck Chou

維修工程師

- Matt Chen

Service Team

Your success is our success



Thank you for your attention



金萬林企業股份有限公司
台北 新竹 台中 台南 高雄
服務專線: 0800-009695
Http://www.kimforest.com
Email: kimforst@gmail.com



Gene On Link

讓您的研究
點石成金
點數破萬
見樹又見林



Consultable
Comprehensive
Customized

applied biosystems
by Thermo Fisher Scientific

MOLECULAR
DEVICES

freeslate

integenX

BECKMAN
COULTER

IFI
DATA TESTING & TECHNOLOGIES

DiscoverX

M · T · T · I

DNASTAR®

enzymatics
the new standard in enzyme production

gen O way

PerkinElmer
For the Better