

## Author's Proof

Carefully read the entire proof and mark all corrections in the appropriate place, using the **Adobe Reader commenting tools** ([Adobe Help](#)). Do not forget to reply to the queries.

We do not accept corrections in the form of edited manuscripts.

In order to ensure the timely publication of your article, please submit the corrections within 48 hours.

If you have any questions, please contact [science.production.office@frontiersin.org](mailto:science.production.office@frontiersin.org).

## Author Queries Form

Query No.	Details required	Author's Response
<b>Q1</b>	The citation and surnames of all of the authors have been highlighted. Please check all of the names carefully and indicate if any are incorrect. Please note that this may affect the indexing of your article in repositories such as PubMed.	1. Author 3, please change to Jen-Jie Chieh 2. Affiliation 2, please change to Department of <b>Medical Genetics</b>
<b>Q2</b>	Confirm that the email address in your correspondence section is accurate.	Correct
<b>Q3</b>	Please ask the following authors to <a href="https://www.frontiersin.org/Registration/Register.aspx">register</a> with Frontiers (at <a href="https://www.frontiersin.org/Registration/Register.aspx">https://www.frontiersin.org/Registration/Register.aspx</a> ) if they would like their names on the article abstract page and PDF to be linked to a Frontiers profile. Please ensure to provide us with the profile link(s) when submitting the proof corrections. Non-registered authors will have the default profile image displayed. "Ni-Chung Lee" "Shieh-Yueh Yang" "Jen-Je Chieh" "Lih-Maan Chang" "Yen-Nan Chiu" "Ai-Chiu Huang" "Yin-Hsiu Chien" "Wuh-Liang Hwu" "Herng-Er Horng".	We've informed authors.
<b>Q4</b>	If you decide to use previously published, copyrighted figures in your article, please keep in mind that it is your responsibility, as the author, to obtain the appropriate permissions and licenses and to follow any citation instructions requested by third-party rights holders. If obtaining the reproduction rights involves the payment of a fee, these charges are to be paid by the authors.	They are not previously published.
<b>Q5</b>	Ensure that all the figures, tables and captions are correct.	Correct
<b>Q6</b>	Verify that all the equations and special characters are displayed correctly.	done
<b>Q7</b>	Please confirm if the Ethics statement included here is fine.	Correct

Query No.	Details required	Author's Response
<b>Q8</b>	Ensure to add all grant numbers and funding information, as after publication this is no longer possible.	Correct
<b>Q9</b>	There is a mismatch in the corresponding author and keywords between manuscript and online abstract. We have followed the manuscript. Please confirm if this is fine.	Correct
<b>Q10</b>	Please provide caption for part labels "Figures 1A–C, 2A–C".	Added in figure legends
<b>Q11</b>	Please include the symbol "*" inside "Figure 1".	Please delete it.
<b>Q12</b>	Please add the Hua et al., 2005 to the reference list.	Hua, M. S., Chang, B. S., Lin, K. N., Yang, J. M., Lu, S. R., And Chen, S. Y. 2005. Wechsler Memory Scale, 3rd Ed. Chinese Behavioral Science Corporation.
<b>Q13</b>	We have updated the author names, volume number and page range for the reference "Centers for Disease Control and Prevention (CDC), 2006" as per publication. Please confirm if these are fine.	Correct
<b>Q14</b>	We have updated the author names for the reference "Nussbaum et al., 2001" as per publication. Please confirm if this is fine.	Correct



# Blood Amyloid Beta and Tau in Down Syndrome: A Comparison with Alzheimer's Disease

Ni-Chung Lee<sup>1,2</sup>, Shieh-Yueh Yang<sup>3,4</sup>, Jen-Je Chieh<sup>3,4,5</sup>, Po-Tsang Huang<sup>6</sup>, Lih-Maan Chang<sup>6</sup>, Yen-Nan Chiu<sup>7</sup>, Ai-Chiu Huang<sup>2</sup>, Yin-Hsiu Chien<sup>1,2</sup>, Wu-Liang Hwu<sup>1,2</sup>, Heng-Er Horng<sup>5\*</sup> and Ming-Jang Chiu<sup>8,9,10,11\*</sup>

<sup>1</sup>Department of Pediatrics, National Taiwan University Hospital, College of Medicine, National Taiwan University, Taipei, Taiwan, <sup>2</sup>Department of Genetic Medicine, National Taiwan University Hospital, College of Medicine, National Taiwan University, Taipei, Taiwan, <sup>3</sup>Institute of Electro-optical Science and Technology, National Taiwan Normal University, Taipei, Taiwan, <sup>4</sup>MagQu Co., Ltd., New Taipei City, Taiwan, <sup>5</sup>Department of Electro-optical Engineering, Kun Shan University, Tainan City, Taiwan, <sup>6</sup>Department of Clinical Psychology, National Taiwan University Hospital, College of Medicine, National Taiwan University, Taipei, Taiwan, <sup>7</sup>Department of Psychiatry, National Taiwan University Hospital, College of Medicine, National Taiwan University, Taipei, Taiwan, <sup>8</sup>Department of Neurology, National Taiwan University Hospital, College of Medicine, National Taiwan University, Taipei, Taiwan, <sup>9</sup>Graduate Institute of Brain and Mind Sciences, College of Medicine, National Taiwan University, Taipei, Taiwan, <sup>10</sup>Department of Psychology, National Taiwan University, Taipei, Taiwan, <sup>11</sup>Graduate Institute of Biomedical Engineering and Bioinformatics, National Taiwan University, Taipei, Taiwan

**Background:** Changes in  $\beta$ -amyloids (A $\beta$ ) and tau proteins have been noted in patients with Alzheimer's disease (AD) and patients with both Down syndrome (DS) and AD. However, reports of changes in the early stage of regression, such as behavioral and psychological symptoms of dementia (BPSD), in DS are sparse.

**Methods:** Seventy-eight controls, 62 patients with AD, 35 with DS and 16 with DS with degeneration (DS\_D), including 9 with BPSD and 7 with dementia, were enrolled. The levels of  $\beta$ -amyloids 40 and 42 (A $\beta$ -40, A $\beta$ -42) and tau protein in the blood were analyzed using immunomagnetic reduction (IMR). The Adaptive Behavior Dementia Questionnaire (ABDQ) was used to evaluate the clinical status of the degeneration.

**Results:** The A $\beta$ -40 and tau levels were higher and the A $\beta$ -42 level and A $\beta$ -42/A $\beta$ -40 ratio were lower in DS than in the controls (all  $p < 0.001$ ). Decreased A $\beta$ -40 and increased A $\beta$ -42 levels and A $\beta$ -42/40 ratios were observed in DS\_D compared with DS without degeneration (all  $p < 0.001$ ). The ABDQ score was negatively correlated with the A $\beta$ -40 level ( $\rho = -0.556$ ) and the tau protein level ( $\rho = -0.410$ ) and positively associated with the A $\beta$ -42 level ( $\rho = 0.621$ ) and the A $\beta$ -42/40 ratio ( $\rho = 0.544$ ; all  $p < 0.05$ ).

**Conclusions:** The A $\beta$ -40 and A $\beta$ -42 levels and the A $\beta$ -42/A $\beta$ -40 ratio are considered possible biomarkers for the early detection of degeneration in DS. The elevated A $\beta$ -40

**Abbreviations:** A $\beta$ , amyloid beta; ABDQ, Adaptive Behavior Dementia Questionnaire; AD, Alzheimer's disease; APP, amyloid beta (A4) precursor protein; BPSD, behavioral and psychological symptoms of dementia; CDR, clinical dementia rating; CSF, cerebrospinal fluid; DMR, Dementia Questionnaire for Mentally Retarded Persons; DS, Down syndrome; DS\_D, Down syndrome with degeneration; DSDS, Dementia Scale for Down Syndrome; DSQIID, Dementia Screening Questionnaire for Individuals with Intellectual Disabilities; IMR, immunomagnetic reduction; RADD, Rapid Assessment for Developmental Disabilities; ROC, receiver operating characteristic; SQUID, superconducting quantum interference device.

## OPEN ACCESS

### Edited by:

Changiz Geula,  
Northwestern University, USA

### Reviewed by:

Ramesh Kandimalla,  
Texas Tech University, USA  
Ahmad Salehi,  
Stanford University, USA

### \*Correspondence:

Heng-Er Horng  
phyfv001@ntnu.edu.tw  
Ming-Jang Chiu  
mjchiu@ntu.edu.tw

**Received:** 15 September 2016

**Accepted:** 08 December 2016

**Published:** xx December 2016

### Citation:

Lee N-C, Yang S-Y, Chieh J-J, Huang P-T, Chang L-M, Chiu Y-N, Huang A-C, Chien Y-H, Hwu W-L, Horng H-E and Chiu M-J (2016) Blood Amyloid Beta and Tau in Down Syndrome: A Comparison with Alzheimer's Disease. *Front. Aging Neurosci.* 8:316. doi: 10.3389/fnagi.2016.00316

and tau levels in DS may indicate early neurodegeneration. The increased A $\beta$ -42 in DS\_D may reflect the neurotoxicity of A $\beta$ -42. The paradox of the tau decreases in DS\_D could be explained by a burnout phenomenon during long-term neurodegeneration. The different patterns of the plasma beta amyloids and tau protein may imply a different pathogenesis between DS with degeneration and AD in the general population, in spite of their common key pathological features.

**Keywords:**  $\beta$ -amyloids, down syndrome, behavioral and psychological symptoms of dementia, Alzheimer's disease, dementia, tau protein

## INTRODUCTION

Down syndrome (DS), or trisomy 21, is the most common aneuploidy associated with mental retardation, with an incidence of approximately 1 in 800 (Lin et al., 1991; Nussbaum et al., 2001; Centers for Disease Control and Prevention (CDC), 2006). In addition to characteristic facial features, hypotonia, congenital heart disease, gastrointestinal anomalies and learning disabilities, people with DS over 35 years old often suffer from a general acceleration of the aging process, including premature menopause, presbycusis, alopecia, premature graying of the hair, dementia, congestive heart failure, atherosclerosis, diabetes, hypercholesterolemia and hypertension. The close link between the DS phenotype and an increased risk of developing dementia has been addressed previously (Bush and Beail, 2004). The incidence of dementia among DS patients is 8% in the age range of 35–49 years, 55% in the age range 50–59 years and 75% above the age of 60 years (Zana et al., 2007). Owing to the extra copy of chromosome 21, several of the 500 genes on chromosome 21 are overexpressed (Mao et al., 2005), including the *APP* gene, which encodes the amyloid beta (A $\beta$ ) precursor protein (APP).

APP is a membranous protein cleaved by different secretases to form smaller fragments (peptides), some of which are released outside the cells (Zheng and Koo, 2011; Kandimalla et al., 2012). A $\beta$ -40 and A $\beta$ -42 constitute the majority of the released amyloid beta peptides and are produced through a combination of sequential  $\beta$  and  $\gamma$  secretase activities (Selkoe, 1994). Thus, the presence of an extra copy of the *APP* gene leads to the overproduction of A $\beta$  peptides in the brain and peripheral blood in DS (Granic et al., 2010). In Alzheimer's disease (AD), elevations of A $\beta$ -42 and tau are observed, and increased A $\beta$ -40 in the plasma has been described as one of the biomarkers for AD. In DS, the amyloid plasma levels of A $\beta$ -40 and A $\beta$ -42 are higher than those of age-matched controls (Coppus et al., 2012). A higher A $\beta$ -42 level was proposed to be related to the earlier onset of dementia and mortality, although other studies suggested that a higher A $\beta$ -40 level at baseline predicted the development of dementia. Although the findings are not consistent between studies, they still highlight the importance of A $\beta$ -40 and A $\beta$ -42 in the pathogenesis of dementia in people with DS (Head et al., 2016).

While the deposition of amyloid beta (A $\beta$ ) plaques has been observed in young DS individuals, senile plaques and neurofibrillary tangles, the pathological hallmarks of AD, are

usually present in DS individuals by the age of 40 (Krasuski et al., 2002; Zana et al., 2007). It has been well documented that the total tau and phosphorylated tau (p-tau 181 and p-tau 231) in the cerebrospinal fluid (CSF) are the main biomarkers for monitoring cortical axonal degeneration in AD (Hampel et al., 2010; Kandimalla et al., 2013; Head et al., 2016). Recently, the concentration of degradation fragments of tau (Tau-A/Tau-C) in the blood was found to be related to the change in cognitive function in early AD patients. In DS with dementia, decreased CSF A $\beta$ -42 and increased tau have been observed (Tapiola et al., 2001).

Recently, the behavioral and psychological symptoms of dementia (BPSD) in DS have been considered as early indicators of clinical dementia (Dekker et al., 2015). However, the diagnosis of BPSD is challenging in DS because of the underlying intellectual disabilities, and the assessment of BPSD in DS has not been well studied (Dekker et al., 2015; Prasher et al., 2015). We have developed a new technology called immunomagnetic reduction (IMR), which is capable of assaying molecules at very low concentrations (Yang et al., 2011; Chiu et al., 2012, 2013, 2014). IMR measures the reduction in the alternating-current magnetic susceptibility of suspended bio-magnetic nanoparticles owing to the immunospecific conjugation between the nanoparticles and A $\beta$  peptides and tau proteins. The A $\beta$ -42 to A $\beta$ -40 concentration ratio and the tau levels in the blood are promising parameters or surrogate biomarkers for evaluating the risk of AD in the general population (Chiu et al., 2012, 2014). In this study, ultra-sensitive IMR was used to assay the plasma A $\beta$ -40, A $\beta$ -42 and tau levels in DS patients. This assay should help us delineate the abnormal concentrations of A $\beta$ -40, A $\beta$ -42 and tau in the blood, which should facilitate the diagnosis of BPSD and dementia in DS. We sought to evaluate the blood amyloid peptides and tau protein in subjects with DS and DS with degeneration (both BPSD and dementia) and to compare these patients with the subjects with AD. The purposes of this study were to explore the changes in blood amyloid and tau in DS and to detect the early deterioration in DS, which could be suggestive of the pathological changes of AD.

## MATERIALS AND METHODS

### Participants

This study was approved by the Research Ethics Committee of National Taiwan University Hospital (No. IRB No.

201304054RIND, and 201008015R). DS patients who, along with their guardians, agreed to participate were enrolled. Informed consent was signed by the participants and/or their proxy prior to study inclusion in accordance with the Declaration of Helsinki. Participants with DS ( $n = 51$ ) were recruited from the Taiwan DS Foundation and the outpatient clinic of the National Taiwan University Hospital from August 2010 to December 2015. The diagnosis of DS was made by karyotype analysis when patients were born with typical clinical presentations. The mean age of blood sampling was  $29.0 \pm 10.6$  years (range 13–52 years). The subjects were asked to provide a 10-ml venous blood sample. Each sample was assigned a registration number following the sampling sequence so that the laboratory operators were blind to the clinical status and the demographic data of the subjects. The blood samples were centrifuged ( $2500 \times g$  for 15 min) within 1 h of collection, and the supernatant was aliquoted into cryotubes and stored at  $-80^\circ\text{C}$  until thawed for measurement.

We also included 78 healthy controls (HC) and 62 patients with AD for comparison. In these groups, the assessments performed in this study included determining the clinical dementia rating (CDR) score and the score on the short-form geriatric depression scale (GDS-S); additionally, the Taiwanese mental status examination (TMSE) and two subtests of the Wechsler memory scale (WMS)-III logical memory subtest and family picture subtest were performed (Hua et al., 2005). For the HCs, the cognitive assessments of the participants had to be within normal limits (scores higher than 1.5 standard deviation) of age- and education-matched normal subjects and CDR = 0. For the patients with AD, they must meet the diagnostic guidelines for dementia due to AD proposed by the NIA-AA workgroups in 2011 (Jack et al., 2011; McKhann et al., 2011).

## Clinical Assessment for Regression

The Adaptive Behavior Dementia Questionnaire (ABDQ) was used to evaluate the status of regression of the DS participants (Prasher et al., 2004). The diagnosis of BPSD was made if the patient had the clinical presentation of apathy, agitation, hyperactivity and/or general slowness, depression and psychotic symptoms (Dekker et al., 2015). Dementia was diagnosed by an ABDQ score higher than 78 or by a clinical AD diagnosis according to the degree of cognitive and functional decline; the clinical diagnosis was performed by an adult neurologist (MJC) who is an expert in the diagnosis and management of dementia. DS patients were subgrouped into degeneration (DS\_D) if they were diagnosed as having BPSD or dementia. The CDR was used to score non-DS populations for AD as a comparison.

## Immunomagnetic Reduction Assay

$\text{A}\beta$ -40,  $\text{A}\beta$ -42 and tau were assayed by IMR with a high-temperature superconducting quantum interference device (SQUID) magnetometer, as previously reported. In brief, 3 reagents (MF-AB0-0060, MF-AB2-0060 and MF-TAU-0060, MagQu, New Taipei City, Taiwan) were used to assay the biomarkers  $\text{A}\beta$ -40,  $\text{A}\beta$ -42 and tau, respectively. These reagents were then mixed with individual samples. Each mixture was

placed in a SQUID-based alternating-current (ac) magnetic susceptometer (XacPro-S, MagQu, Taiwan), and the IMR signals from these samples were detected and converted to the concentrations of  $\text{A}\beta$ -40,  $\text{A}\beta$ -42 and tau using the characteristic curves. For detailed procedures and technical information, please refer to our previous reports.

## Statistical Analysis

Data were expressed as the mean  $\pm$  standard deviation. The Mann-Whitney U test was used. Spearman's rank correlation coefficient was used to determine the correlations between the ABDQ score and the  $\text{A}\beta$ -42/ $\text{A}\beta$ -40 ratio and  $\text{A}\beta$ -40,  $\text{A}\beta$ -42 and tau levels.  $P < 0.05$  was considered statistically significant. SPSS (SPSS, Inc., 2008, SPSS Statistics for Windows, Version 17.0. Chicago, IL, USA) was used to conduct receiver operating characteristic (ROC) curve analysis. The optimal threshold for the ROC curve was determined by Youden's index using the maximum summation of the sensitivity plus specificity with respect to DS without degeneration as a control (Youden, 1950).

## RESULTS

### Elevation of Baseline $\text{A}\beta$ -40 Levels in DS Patients Compared to Normal Subjects

The demographic data of the participants are listed in Table 1. We first divided the HC into younger and older groups. Because the biomarker levels did not show significant differences, we combined them into one group (HC). The  $\text{A}\beta$ -40 level was higher in DS patients than in healthy subjects (both younger and older groups), (Table 1; Figure 1A;  $p < 0.001$ ). However, the  $\text{A}\beta$ -42 level and the  $\text{A}\beta$ -42/ $\text{A}\beta$ -40 ratio were lower in the DS patients than in the HC (Figures 1B,C; both  $p < 0.001$ ). Compared to the HC, individuals with non-DS AD had a lower  $\text{A}\beta$ -40 level and a higher  $\text{A}\beta$ -42 level and  $\text{A}\beta$ -42/ $\text{A}\beta$ -40 ratio ( $p < 0.01$ ,  $p = 0.01$  and  $p < 0.01$ , respectively). This pattern was also observed in DS subjects. Compared to those with DS without degeneration, the patients with DS with degeneration (DS\_D; BPSD and dementia) had a lower  $\text{A}\beta$ -40 level and a higher  $\text{A}\beta$ -42 level and  $\text{A}\beta$ -42/ $\text{A}\beta$ -40 ratio (all  $p < 0.001$ ).

### Correlation Between ABDQ Score and $\text{A}\beta$ Results

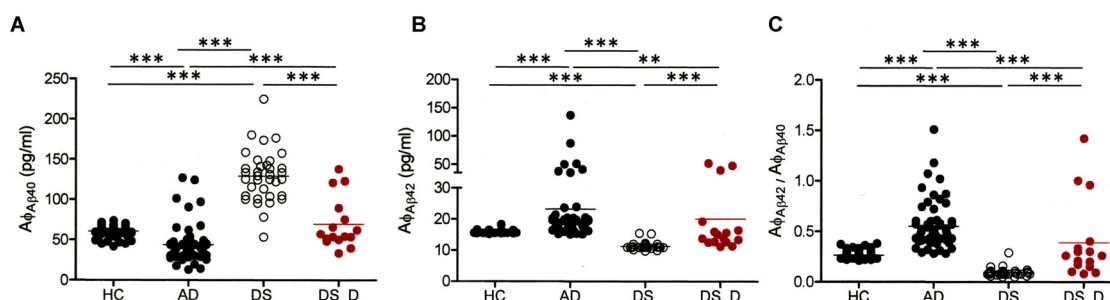
ABDQ has been used as a screening tool for dementia in DS. In our subjects with DS, there were significant differences in the ABDQ score between subjects with and without degeneration (BPSD and dementia; Table 1;  $60.6 \pm 19.8$  vs.  $25.4 \pm 13.8$ ;  $p < 0.001$ ). No significant difference was found in the ABDQ scores between patients with DS with dementia and those with DS with BPSD ( $71.8 \pm 24.3$  vs.  $52.1 \pm 10.9$ ;  $p = 0.080$ ). We found a significant negative correlation between the  $\text{A}\beta$ -40 level and ABDQ score ( $\rho = -0.556$ ;  $p < 0.001$ ) and positive associations between the  $\text{A}\beta$ -42 level ( $\rho = 0.621$ ), the  $\text{A}\beta$ -42/ $\text{A}\beta$ -40 ratio ( $\rho = 0.544$ ) and the ABDQ score (both  $p < 0.001$ ; Figure 2).



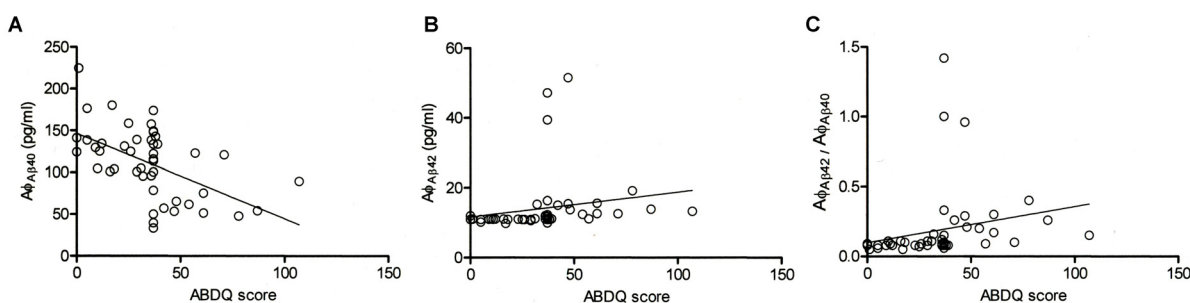
**TABLE 1 | Demographic and biomarker data of the participants.**

Group	HC_Y	HC_E	AD	DS	DS_D
Number	44	34	62	35	16
Female/Male	14/30	20/14	32/29	16/19	6/10
Age (years)	38.4 ± 13.5	70.3 ± 5.8	72.1 ± 11.1	25.6 ± 9.3	35.4 ± 10.7
(range)	(23–59)	(61–81)	(42–93)	(13–51)	(20–52)
ABDQ <sub>DS</sub>	—	—	—	25.4 ± 13.8	58.8 ± 20.8
CDR <sub>AD</sub> (n)	0	0	31/19/9/3	—	—
Aβ-40 (pg/ml)	61.1 ± 6.3	60.7 ± 6.9	43.9 ± 22.1	129.0 ± 31.8	69.5 ± 31.5
Aβ-42 (pg/ml)	15.8 ± 0.3	16.0 ± 0.5	23.2 ± 18.4	11.3 ± 1.1	20.1 ± 13.2
Aβ-42/Aβ-40	0.26 ± 0.03	0.27 ± 0.04	0.55 ± 0.23	0.10 ± 0.04	0.39 ± 0.38
Tau (pg/ml)	14.9 ± 5.5	15.0 ± 7.3	47.5 ± 18.9	31.5 ± 8.0	26.3 ± 17.3

HC-Y, young healthy controls; HC-E, older healthy controls; DS, Down syndrome; AD, Alzheimer's disease; DS\_D, DS with degeneration (behavioral and psychological symptoms of dementia (BPSD) or dementia); ABDQ, Adaptive Behavior Dementia Questionnaire; CDR, clinical dementia rating 0.5/1/2/3.



**FIGURE 1 |**  $\beta$ -amyloids 40 ( $A\beta$ -40;  $A\phi_{A\beta40}$ ) and  $A\beta$ -42 ( $A\phi_{A\beta42}$ ) levels and the  $A\beta$ -42/ $A\beta$ -40 ( $A\phi_{A\beta42}/A\phi_{A\beta40}$ ) ratio in healthy controls (HC, combining the younger and older groups) and in patients with Alzheimer's disease (AD), Down syndrome (DS) and DS with degeneration (DS\_D; behavioral and psychological symptoms of dementia (BPSD) and dementia). For  $A\beta$ -40,  $p < 0.001$  between HC and AD;  $p < 0.001$  between HC and DS;  $p < 0.001$  between AD and DS;  $p = 0.497$  between HC and DS\_D;  $p < 0.001$  between AD and DS\_D; and  $p < 0.001$  between DS and DS\_D. For  $A\beta$ -42,  $p < 0.001$  between HC and AD;  $p < 0.001$  between HC and DS;  $p < 0.001$  between AD and DS;  $p = 0.070$  between HC and DS\_D;  $p = 0.001$  between AD and DS\_D; and  $p < 0.001$  between DS and DS\_D. For  $A\beta$ -42/ $A\beta$ -40,  $p < 0.001$  between HC and AD;  $p < 0.001$  between HC and DS;  $p < 0.001$  between AD and DS;  $p < 0.001$  between AD and DS\_D;  $p = 0.888$  between HC and DS\_D;  $p < 0.001$  between AD and DS; and  $p < 0.001$  between DS and DS\_D. \* $p < 0.05$ ; \*\* $p < 0.01$ ; \*\*\* $p < 0.001$ .



**FIGURE 2 |** Correlation of the Adaptive Behavior Dementia Questionnaire (ABDQ) score with the  $A\beta$ -40 ( $A\phi_{A\beta40}$ ) and  $A\beta$ -42 ( $A\phi_{A\beta42}$ ) levels and the  $A\beta$ -42/ $A\beta$ -40 ( $A\phi_{A\beta42}/A\phi_{A\beta40}$ ) ratio in DS patients (combined DS and DS\_D groups). A significant negative correlation between the  $A\beta$ -40 level and ABDQ score ( $\rho = -0.556$ ;  $p < 0.001$ ) and positive associations between the ABDQ score and the  $A\beta$ -42 level ( $\rho = 0.621$ ;  $p < 0.001$ ) and  $A\beta$ -42/ $A\beta$ -40 ratio ( $\rho = 0.544$ ;  $p < 0.001$ ) were noted.

## Prediction of Degeneration Using Amyloid

To characterize the diagnostic possibilities, we performed ROC curve analysis to compare the patients with DS and those with DS\_D (Figure 3). The areas under the curve (AUCs)

of the  $A\beta$ -40 and  $A\beta$ -42 levels and the  $A\beta$ -42/ $A\beta$ -40 ratio were 0.900, 0.937 and 0.902, respectively. The sensitivity and specificity in differentiating DS from DS\_D were 81.3% and 94.3%, respectively, using  $A\beta$ -40, with a threshold of 92.2 pg/ml

(Figures 3A,B); 87.5% and 94.3%, respectively, using A $\beta$ -42, with a threshold of 12.36 pg/ml (Figures 3C,D); and 81.3% and 91.4%, respectively, using the A $\beta$ -42/A $\beta$ -40 ratio, with a threshold of 0.13 (Figures 3E,F).

## Elevation of Baseline Tau Levels in DS Patients Compared to Normal Subjects

We also determined the tau concentration in 21 DS participants, including 9 with DS\_D. In the DS subjects, the baseline tau protein level was higher than that in the HC (Table 1 and Figure 4A;  $31.5 \pm 8.0$  vs.  $14.9 \pm 5.5$  pg/ml;  $p < 0.001$ ). We found a significant negative correlation between tau and the ABDQ score in DS patients (combine DS and DS\_D groups; Figure 4B,  $\rho = -0.410$ ;  $p = 0.018$ ). This finding supports the relationship between cognitive/functional declines and tau profile changes. However, the ROC curve analysis for differentiating DS from DS\_D using tau yielded an AUC of only 0.49.

## DISCUSSION

Because of the baseline cognitive impairment in DS subjects, it is challenging to diagnose dementia and detect early BPSD in DS populations. Several assessment tools and questionnaires can be used to evaluate the signs and symptoms of AD in DS, including ABDQ, the Dementia Scale for Down Syndrome (DSDS), the Dementia Screening Questionnaire for Individuals with Intellectual Disabilities (DSQIID), the Dementia Questionnaire for Mentally Retarded Persons (DMR) and the recently developed Rapid Assessment for Developmental Disabilities (RADD). However, these tools are not satisfactory because of their ceiling or floor effects. In this study, we not only used ABDQ to screen DS patients but also employed a neurologist who specializes in the diagnosis and management of patients with dementia to evaluate the general behavior presentation for the diagnosis of AD in DS subjects.

In this study, we demonstrated that compared with healthy subjects in general, adolescent DS subjects already had elevated levels of A $\beta$ -40 and tau protein. The baseline elevation of A $\beta$ -40 in DS adolescents and adults is a reasonable finding based on the APP protein overexpression in DS, with the majority of A $\beta$  cleaved into A $\beta$ -40. This finding is consistent with previous reports (Schupf et al., 2001, 2010; Head et al., 2011; Coppus et al., 2012). Furthermore, this result suggests that APP is abnormally cleaved in DS subjects with dementia and indicates that the underlying pathophysiology of DS with dementia might be different from that of non-DS patients with AD.

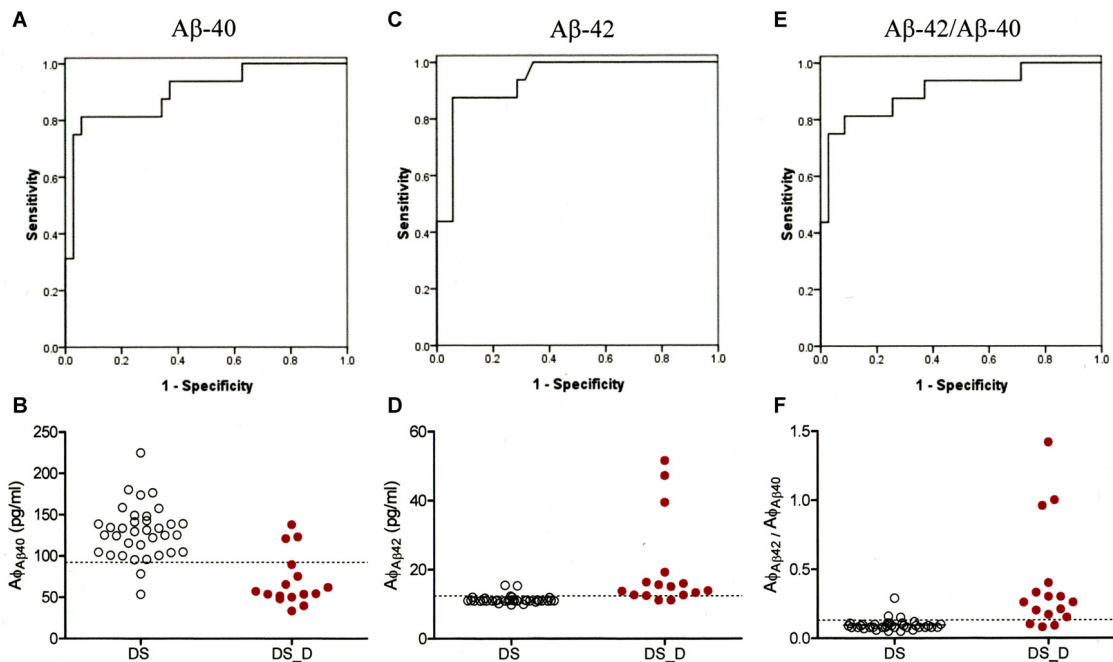
We also found that the A $\beta$ -40 is decreased and the A $\beta$ -42 and A $\beta$ -42/A $\beta$ -40 ratio are increased in the blood of DS\_D patients. This observation may imply that with degeneration, a higher percentage of APP is cleaved into A $\beta$ -42 rather than A $\beta$ -40. The finding of increases in the A $\beta$ -42 level and A $\beta$ -42/A $\beta$ -40 ratio in DS\_D patients is in agreement with previous reports of observations of non-DS populations with mild cognitive impairment and AD. In the DS subjects, the majority of reports demonstrated higher A $\beta$ -42 levels at the baseline compared with those of HC and a higher A $\beta$ -42 level and A $\beta$ -42/A $\beta$ -40 ratio

in those with DS with dementia. This finding further suggests that A $\beta$ -42 is a critically toxic substance to the brain in both groups of subjects with AD, with or without DS. In addition, we demonstrated a negative correlation between the ABDQ score and the A $\beta$ -40 level and a positive association between the ABDQ score and the A $\beta$ -42/A $\beta$ -40 ratio in DS subjects. This correlation may imply their possible utility as biomarkers to help evaluate the degeneration in DS.

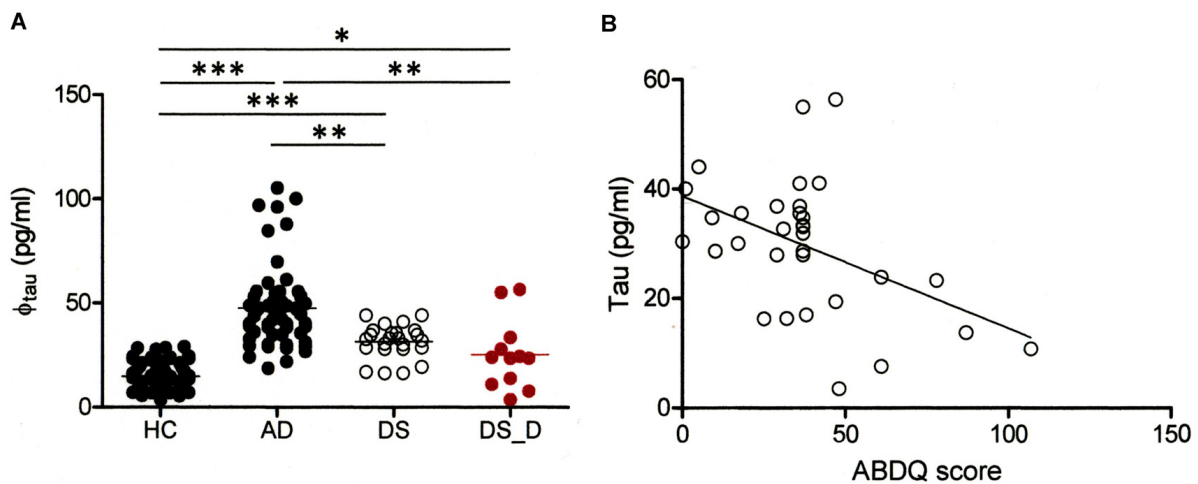
The tau protein is a microtubule-associated protein located inside neurons, and hyperphosphorylated tau is the main component of the neurofibrillary tangles in AD. Because tau is an intracellular protein, a higher baseline tau level in DS might indicate early neurodegeneration (neuronal damage), and tau may consequently be elevated in DS subjects before the onset of dementia or BPSD. However, we found a negative correlation between the tau protein and ABDQ and observed a lower tau level in DS\_D. This paradox may be explained by a possible burnout phenomenon of neurons during the prolonged neurodegenerative process and a consequently lower level of tau. A longitudinal study is required to confirm our proposed explanation.

In this study, we found that the A $\beta$ -40 and A $\beta$ -42 levels and the A $\beta$ -42/A $\beta$ -40 ratio may be good indicators for the early detection of degeneration in DS. In our previous reports in a general population with mild cognitive impairment and AD, the differential sensitivity and specificity of A $\beta$ -42 and tau between HC and non-DS AD were approximately 0.9 (0.88–0.97), using thresholds of 16.33 pg/ml for A $\beta$ -42 and 23.89 pg/ml for tau. The threshold for A $\beta$ -42 that we used to differentiate DS\_D from DS was 12.36 pg/ml, with a sensitivity of 0.875 and a specificity of 0.943, which was lower than that for non-DS AD. The reason is not clear but could be the younger age of the DS cohort and the inclusion of DS with BPSD, which probably represents an early stage of DS AD. The threshold for tau was 26.04 pg/ml, with a sensitivity of 0.636 and specificity of 0.8883; this threshold was higher than that for non-DS AD. However, in DS, the baseline tau level was higher than in the general population, and a decrease in tau was noted in DS with AD. These results indicate that the tau levels that demarcate AD differ between DS AD and non-DS AD.

This study has some limitations. First, the mean age of our DS subjects was younger than that of the HC because of the difficulty of obtaining blood samples from adolescents for ethical reasons in our hospital. We tried to divide the HC into two different age groups (ages of 23–59 years and 61–81 years), but the amyloid and tau levels did not exhibit significant between-group differences. Therefore, we pooled the results of the healthy subjects from both age groups into one single group for further analysis to improve the statistical power. However, this gap could be overcome by evidence from previous reports that DS subjects have elevated plasma A $\beta$ -40 levels compared to those of age-matched HC (Schupf et al., 2001, 2010; Head et al., 2011; Coppus et al., 2012). Second, the small sample size of the subjects of DS with dementia, especially the number of tau samples, hindered the statistical analysis. Third, we did not analyze other risk factors for dementia, such as APP or presenilin (PSEN1 and PSEN2)



**FIGURE 3 | Receiver operating characteristic (ROC) curve of  $A\beta_{40}$ ,  $A\beta_{42}$  and  $A\beta_{42}/A\beta_{40}$  for the differential diagnosis of DS without (DS) and with degeneration (DS\_D). (A) ROC curve of  $A\beta_{40}$ . (B) Concentration of  $A\beta_{40}$  for the differential diagnosis between DS and DS\_D. (C) ROC curve of  $A\beta_{42}$ . (D) Concentration of  $A\beta_{42}$  for the differential diagnosis between DS and DS\_D. (E) ROC curve of  $A\beta_{42}/A\beta_{40}$ . (F) Concentration of  $A\beta_{42}$  for the differential diagnosis between DS and DS\_D.**



**FIGURE 4 | Comparison of tau protein in different groups. (A) Tau protein ( $\phi_{tau}$ ) in HC and in subjects with AD, DS or DS with degeneration (BPSD and with dementia; DS\_D). For tau,  $p < 0.001$  between HC and AD;  $p < 0.001$  between HC and DS;  $p < 0.001$  between AD and DS;  $p = 0.019$  between HC and DS\_D;  $p = 0.001$  between AD and DS\_D; and  $p = 0.140$  between DS and DS\_D. \*  $p < 0.05$ ; \*\*  $p < 0.01$ ; \*\*\*  $p < 0.001$ . (B) Correlation of the Adaptive Behavior Dementia Questionnaire (ABDQ) score with the tau. A significant negative correlation between the  $A\beta_{40}$  level and ABDQ score was noted ( $\rho = -0.410$ ;  $p = 0.018$ ).**

mutations, although the prevalence of these factors in dementia is extremely low in the general population. Other possible contributing factors for dementia should be explored in DS subjects in future studies. Finally, recent studies revealed that

the elevation of tau in the blood is related to changes in the cognitive function over time in early AD subjects. In contrast, we observed a decline in tau levels in DS with degeneration (which were still higher than those of HC) and proposed



a burnout phenomenon of brain tissue from the prolonged neurodegeneration process. A longitudinal cohort study is required to confirm the finding of the tau decline during the process of DS degeneration.

## CONCLUSION

The diagnosis of dementia and/or BPSD in DS is challenging. This study establishes the capability of differentiating between DS with and without degeneration. The beta amyloid and tau levels and the ABDQ score may assist in the early detection of regression in DS, which might represent an early Alzheimer's pathology. However, the different patterns of the plasma beta amyloids and tau protein may imply a different pathogenesis between DS with degeneration and AD in the general population, in spite of their common key pathological features.

## AUTHOR CONTRIBUTIONS

N-CL and M-JC conducted the study and performed the statistical analysis and main drafting of the manuscript. S-YY and J-JC performed the SQUID analysis. P-TH, L-MC, A-CH and Y-NC performed the behavior evaluations and participated in the

## REFERENCES

- Bush, A., and Beail, N. (2004). Risk factors for dementia in people with down syndrome: issues in assessment and diagnosis. *Am. J. Ment. Retard.* 109, 83–97. doi: 10.1352/0895-8017(2004)109<83:RFFDIP>2.0.CO;2
- Centers for Disease Control and Prevention (CDC) (2006). Improved national prevalence estimates for 18 selected major birth defects—United States, 1999–2001. *MMWR Morb. Mortal. Wkly. Rep.* 54, 1301–1305. doi: 10.1001/jama.295.6.618
- Chiu, M.-J., Chen, Y.-F., Chen, T.-F., Yang, S.-Y., Yang, F.-P. G., Tseng, T.-W., et al. (2014). Plasma tau as a window to the brain—negative associations with brain volume and memory function in mild cognitive impairment and early Alzheimer's disease. *Hum. Brain Mapp.* 35, 3132–3142. doi: 10.1002/hbm.22390
- Chiu, M. J., Yang, S. Y., Chen, T. F., Chieh, J. J., Huang, T. Z., Yip, P. K., et al. (2012). New assay for old markers—plasma beta amyloid of mild cognitive impairment and Alzheimer's disease. *Curr. Alzheimer Res.* 9, 1142–1148. doi: 10.2174/156720512804142967
- Chiu, M.-J., Yang, S.-Y., Horng, H.-E., Yang, C.-C., Chen, T.-F., Chieh, J.-J., et al. (2013). Combined plasma biomarkers for diagnosing mild cognition impairment and Alzheimer's disease. *ACS Chem. Neurosci.* 4, 1530–1536. doi: 10.1021/cn400129p
- Coppus, A. M. W., Schuur, M., Vergeer, J., Janssens, A. C. J. W., Oostra, B. A., Verbeek, M. M., et al. (2012). Plasma  $\beta$  amyloid and the risk of Alzheimer's disease in Down syndrome. *Neurobiol. Aging* 33, 1988–1994. doi: 10.1016/j.neurobiolaging.2011.08.007
- Dekker, A. D., Strydom, A., Coppus, A. M., Nizetic, D., Vermeiren, Y., Naudé, P. J., et al. (2015). Behavioural and psychological symptoms of dementia in Down syndrome: early indicators of clinical Alzheimer's disease? *Cortex* 73, 36–61. doi: 10.1016/j.cortex.2015.07.032
- Granic, A., Padmanabhan, J., Norden, M., and Potter, H. (2010). Alzheimer A $\beta$  peptide induces chromosome mis-segregation and aneuploidy, including trisomy 21: requirement for tau and APP. *Mol. Biol. Cell* 21, 511–520. doi: 10.1091/mbc.e09-10-0850
- Hampel, H., Frank, R., Broich, K., Teipel, S. J., Katz, R. G., Hardy, J., et al. (2010). Biomarkers for Alzheimer's disease: academic, industry and regulatory perspectives. *Nat. Rev. Drug Discov.* 9, 560–574. doi: 10.1038/nrd3115

design and coordination of the study. Y-HC, W-LH and H-EH jointly conceived the study. All authors read and approved the final manuscript.

## FUNDING

This work was supported in part by the Ministry of Science and Technology of Taiwan 102-2314-B-002-085, 104-2745-B-003-002 and 102-2923-B-002-007-MY3; and the Ministry of Economic Affairs of Taiwan under grant numbers 101-EC-17-A-17-I1-0074, 1Z970688 and 1Z0990415 (SBIR).

## ACKNOWLEDGMENTS

We are grateful for the support of the Taiwan Down Syndrome Foundation and the participation of the patients and families. The authors acknowledge statistical assistance provided by the Taiwan Clinical Trial Statistical Center, Training Center and Pharmacogenomics Laboratory (Which is founded by National Research Program for Biopharmaceuticals (NRPB) at the Ministry of Science and Technology of Taiwan; MOST 104-2325-B-002-032), and the Department of Medical Research in National Taiwan University Hospital.

- Head, E., Doran, E., Nistor, M., Hill, M., Schmitt, F. A., Haier, R. J., et al. (2011). Plasma amyloid- $\beta$  as a function of age, level of intellectual disability and presence of dementia in Down syndrome. *J. Alzheimers Dis.* 23, 399–409. doi: 10.3233/JAD-2010-101335
- Head, E., Lott, I. T., Wilcock, D. M., and Lemere, C. A. (2016). Aging in Down Syndrome and the development of Alzheimer's disease neuropathology. *Curr. Alzheimer Res.* 13, 18–29. doi: 10.2174/1567205012666151020114607
- C. R. Jr., Albert, M. S., Knopman, D. S., McKhann, G. M., Sperling, R. A., Carrillo, M. C., et al. (2011). Introduction to the recommendations from the National institute on aging-Alzheimer's association workgroups on diagnostic guidelines for Alzheimer's disease. *Alzheimers Dement.* 7, 257–262. doi: 10.1016/j.jalz.2011.03.004
- Kandimalla, R. J. L., Prabhakar, S., Wani, W. Y., Kaushal, A., Gupta, N., Sharma, D. R., et al. (2013). CSF p-Tau levels in the prediction of Alzheimer's disease. *Biol. Open* 2, 1119–1124. doi: 10.1242/bio.20135447
- Kandimalla, R. J., Wani, W. Y., Binukumar, B. K., and Gill, K. D. (2012). siRNA against presenilin 1 (PS1) down regulates amyloid  $\beta$ 42 production in IMR-32 cells. *J. Biomed. Sci.* 19:2. doi: 10.1186/1423-0127-19-2
- Krasuski, J. S., Alexander, G. E., Horwitz, B., Rapoport, S. I., and Schapiro, M. B. (2002). Relation of medial temporal lobe volumes to age and memory function in nondemented adults with Down's syndrome: implications for the prodromal phase of Alzheimer's disease. *Am. J. Psychiatry* 159, 74–81. doi: 10.1176/appi.ajp.159.1.74
- Lin, S. J., Hu, S. C., Sheu, S. F., Ho, J. W., Chiou, P. C., Chao, M. C., et al. (1991). Anthropometric study on Down syndrome in Taiwan. *Zhonghua Min. Guo Xiao Er Ke Yi Xue Hui Za Zhi* 32, 158–164.
- Mao, R., Wang, X., Spitznagel, E. L. Jr., Frelin, L. P., Ting, J. C., Ding, H., et al. (2005). Primary and secondary transcriptional effects in the developing human Down syndrome brain and heart. *Genome Biol.* 6:R107. doi: 10.1186/gb-2005-6-13-r107
- McKhann, G. M., Knopman, D. S., Chertkow, H., Hyman, B. T., Jack, C. R. Jr., Kawas, C. H., et al. (2011). The diagnosis of dementia due to Alzheimer's disease: recommendations from the National institute on aging-Alzheimer's association workgroups on diagnostic guidelines for Alzheimer's disease. *Alzheimers Dement.* 7, 263–269. doi: 10.1016/j.jalz.2011.03.005

Q14

- Nussbaum, R. L., McInnes, R. R., and Willard, H. F. (2001). *Thompson and Thompson Genetics in Medicine*. Philadelphia, PA: W.B. Saunders.
- Prasher, V., Farooq, A., and Holder, R. (2004). The adaptive behaviour dementia questionnaire (ABDQ): screening questionnaire for dementia in Alzheimer's disease in adults with Down syndrome. *Res. Dev. Disabil.* 25, 385–397. doi: 10.1016/j.ridd.2003.12.002
- Prasher, V. P., Sachdeva, N., and Tarrant, N. (2015). Diagnosing dementia in adults with Down's syndrome. *Neurodegener. Dis. Manag.* 5, 249–256. doi: 10.2217/nmt.15.8
- Schupf, N., Patel, B., Silverman, W., Zigman, W. B., Zhong, N., Tycko, B., et al. (2001). Elevated plasma amyloid  $\beta$ -peptide 1–42 and onset of dementia in adults with Down syndrome. *Neurosci. Lett.* 301, 199–203. doi: 10.1016/s0304-3940(01)01657-3
- Schupf, N., Zigman, W. B., Tang, M. X., Pang, D., Mayeux, R., Mehta, P., et al. (2010). Change in plasma A $\beta$  peptides and onset of dementia in adults with Down syndrome. *Neurology* 75, 1639–1644. doi: 10.1212/WNL.0b013e3181fb448b
- Selkoe, D. J. (1994). Normal and abnormal biology of the beta-amyloid precursor protein. *Annu. Rev. Neurosci.* 17, 489–517. doi: 10.1146/annurev.neuro.17.1.489
- Tapiola, T., Soininen, H., and Pirttilä, T. (2001). CSF tau and A $\beta$ 42 levels in patients with Down's syndrome. *Neurology* 56, 979–980. doi: 10.1212/wnl.56.7.979
- Yang, C.-C., Yang, S.-Y., Chieh, J.-J., Horng, H.-E., Hong, C.-Y., Yang, H.-C., et al. (2011). Biofunctionalized magnetic nanoparticles for specifically detecting biomarkers of Alzheimer's disease *in vitro*. *ACS Chem. Neurosci.* 2, 500–505. doi: 10.1021/cn200028j
- Youden, W. J. (1950). Index for rating diagnostic tests. *Cancer* 3, 32–35. doi: 10.1002/1097-0142(1950)3:1<32::AID-CNCR2820030106>3.0.CO;2-3
- Zana, M., Janka, Z., and Kálmán, J. (2007). Oxidative stress: a bridge between Down's syndrome and Alzheimer's disease. *Neurobiol. Aging* 28, 648–676. doi: 10.1016/j.neurobiolaging.2006.03.008
- Zheng, H., and Koo, E. H. (2011). Biology and pathophysiology of the amyloid precursor protein. *Mol. Neurodegener.* 6:27. doi: 10.1186/1750-1326-6-27
- Conflict of Interest Statement:** The authors declare that the research was conducted in the absence of any commercial or financial relationships that could be construed as a potential conflict of interest.
- Copyright © 2016 Lee, Yang, Chieh, Huang, Chang, Chiu, Huang, Chien, Hwu, Horng and Chiu. This is an open-access article distributed under the terms of the Creative Commons Attribution License (CC BY). The use, distribution and reproduction in other forums is permitted, provided the original author(s) or licensor are credited and that the original publication in this journal is cited, in accordance with accepted academic practice. No use, distribution or reproduction is permitted which does not comply with these terms.